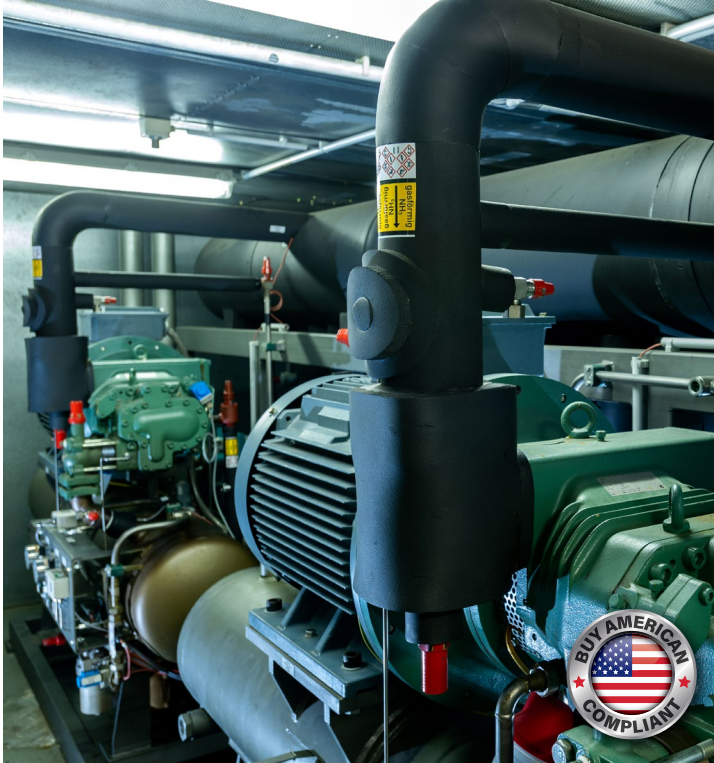




AEROFLEX®

Special Purpose Contact Adhesive



REF 1520™

Professional-Grade Rubber Contact Adhesive





REF 1520™

Professional-Grade Rubber Contact Adhesive

Refrigeration | HVAC | VRF | Chilled Water |
Duct Liner | Ductwrap | Hot & Cold-Water Piping

Fast tack, solvent-based contact adhesive specially formulated for bonding adjoining seams of Aerocel® insulation and to suitable substrates.

Colors: Amber and Black (1 pint w/ brush-top only)

Sizes: 1 gallon, 1 quart, 1 pint w/ brush-top, 1/2 pint w/ brush-top

Fast, simple to install

Fast tack times of 1-5 minutes (depending on ambient conditions)

Best choice for refrigeration applications

Superior performance

Strong permanent bonds

High water vapor resistance

Properly sealed seams minimize likelihood of corrosion under insulation (CUI)

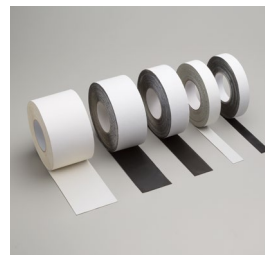


Aeroflex insulation system solutions



Aerofix®

Light-weight, rigid pipe supports, pre-insulated with closed-cell EPDM foam rubber and encased with zero-perm EPDM polymer membrane. Includes built-in pressure sensitive Protape® closure system.



Protape®

Zero-perm, EPDM-based, self-adhering rubber tape for sealing adjoining seams and termination points.



Aerocoat™

A premium specialty coating for exterior weather protection and as a decorative finish.



Aerocoat LVOC™

A low-VOC UV protective coating, best choice for LEED® projects.

Product: Synthetic rubber-based contact adhesive for bonding Aerocel insulation to itself and to suitable substrates such as clean metal.

Application: Stir contents thoroughly before use. Do not thin. Apply thin even coat to both clean and dry surfaces with short-bristle brush or adhesive roller. Allow short tack time (1-5 minutes or more depending on ambient conditions) until tacky to the touch (no transfer) before applying both glued surfaces together. The bond is immediate with no adjustability. Moderate pressure should be applied over the entire area to ensure complete contact and a vapor seal.

REF 1520 should be applied when ambient and surface temperatures are above 40°F (4°C) and below 100°F (38°C). Do not allow to freeze.

If Protape, Aerocoat™ or Aerocoat LVOCTM must be applied over glued seams, allow adhesive to cure for 24-36 hours before tape or coating is applied. For full adhesion of REF 1520 to Aerocel sheets and rolls, allow adhesive to cure for 7 days prior to taping or coating application.

Clean Up: Use acetone to clean adhesive residue from tools.

Physical Properties

Composition (Amber or Black)	Synthetic rubber base with added resins and fillers
Solids Content	Approximately 22% by weight
Net Weight	6.9 lbs/gal
VOC Content	615 g/L
Service Temperature Range	-20°F to 257°F (piping), 200°F (sheets & rolls) -28°C to 125°C (piping), 93°C (sheets & rolls)
Flame Spread/Smoke-Developed Index	25/50 (ASTM E 84)
Tack Time	1-5 minutes (tacky to touch, no transfer)
Dry Time	24-36 hours (seams), 7 days (full coverage)
Coverage	Up to 200 ft ² /gal
Shelf Life	1 year (store at 60°F (16°C) - 80°F (27°C))

Read all warnings on label before use.

Find us in

MasterSpec®

a product of The American Institute of Architects

BSD
SpecLink





282 Industrial Park Road Sweetwater, TN 37874
423.337.2493 Fax: 423.337.7675 Toll Free: 866.AEROCEL
www.aeroflexusa.com

101121