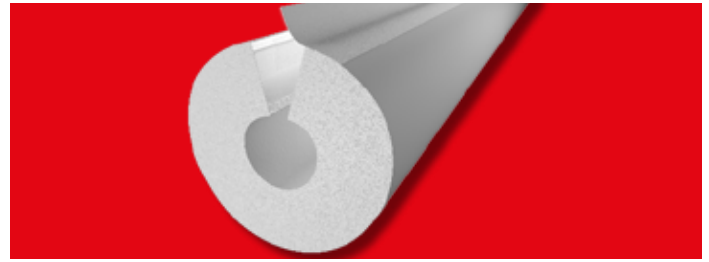


## K-FLEX ▶ INSUL-LOCK® DS WHITE

# INSUL-LOCK® DS WHITE

CLOSED CELL FLEXIBLE ELASTOMERIC  
FOAM INSULATION FACTORY-APPLIED  
DOUBLESEAL CLOSURE SYSTEM



### DESCRIPTION ▶

K-FLEX® INSUL-LOCK® DS WHITE (DoubleSeal) is an NBR/PVC-based closed cell, flexible elastomeric foam insulation. It is pre-slit with a factory-applied pressure sensitive modified-acrylic adhesive with scrim reinforcement on the seam surface and a flexible PVC overlap tape with acrylic adhesive for doubled seam security. It is environmentally-friendly as it is free of CFCs, HFCs, HCFCs, PBDEs, formaldehyde and fibers. An EPA-registered antimicrobial agent is incorporated into the product providing additional protection against mold, fungal and bacterial growth. It is UL GREENGUARD® Gold Certified for low VOC emissions. The product's key physical properties are approved by Factory Mutual. The product is made in K-FLEX USA's ISO 9001:2008-certified manufacturing facility in North Carolina.

### AVAILABILITY ▶

K-FLEX® INSUL-LOCK® DS WHITE is white in color and is available in 6' length tube form in wall thicknesses of 1/2" up to 2" in diameter sizes ranging from 3/8" I.D. to 4-1/8" ID. (ID range is subject to variation depending on wall thickness).

### APPLICATION ▶

K-FLEX® INSUL-LOCK® DS WHITE is recommended for applications with service temperatures ranging from -40°F (-40°C) to +220°F (+104°C). It is designed for use where piping will be painted or left exposed, as commonly seen in supermarket, hospital and school applications. The product is used to retard heat gain and prevent condensation or frost formation on below-ambient applications, including refrigerant, cold water plumbing, chilled water, and industrial process lines, among others. It can be used with heat tracing tapes. It also retards heat loss from medium hot systems, including hot water plumbing, liquid heating, dual temperature, and solar thermal piping, among others.

### OUTDOOR APPLICATION ▶

K-FLEX® INSUL-LOCK® DS WHITE has limited UV resistance and should not be used for outdoor applications unless it is protected with K-FLEX CLAD® or other approved jacketing material (refer to Technical Bulletin TA7). Coatings requiring multiple coats and ongoing maintenance are not recommended for use with K-FLEX® INSUL-LOCK® DS WHITE. Where these types of protective coatings are desired, INSUL-LOCK® DS is recommended.

### INSTALLATIONS ▶

K-FLEX® INSUL-LOCK® DS WHITE is flexible (even at low temperatures), durable (non-fracturing and skin is resistant to tearing from handling and environment), safe to handle (non-dusting and non-abrasive), and lightweight for an efficient installation. K-FLEX® INSUL-LOCK® DS WHITE is designed to save on labor costs, particularly on straight runs, and reduce the use of contact adhesives, allowing for improved working conditions and compliance with OSHA requirements.

K-FLEX recommends that insulation is installed on non-operational systems with clean, dry surfaces in ambient conditions between 40°F and 100°F. For cold weather installations, it is critical that sufficient pressure levels be applied for proper seam sealing. For properly sized insulation tubing, slip the tube on the pipe, pull the built-in release liner, pinch the tube shut, apply pressure at the seams, and apply the overlap seam using pressure. All butt joints, termination points and open ends should be sealed with an approved contact adhesive, making sure both surfaces to be joined are coated. Longitudinal seams should face downward and vapor stops should be installed as needed. Fittings (elbows, tees, p-traps) and special parts (flanges, valves, etc.) can be field-fabricated from insulation tubes and sheets or K-Fit® factory-fabricated fittings can be used. ASTM C1710, Installation Guide for Flexible Closed Cell Foams, and the K-FLEX Installation Manual should be used as comprehensive installation guides.

### RESISTANCE TO MOISTURE VAPOR FLOW ▶

The expanded closed cell structure and unique formulation inherently resists moisture vapor intrusion. For most indoor applications, K-FLEX® INSUL-LOCK® DS WHITE needs no additional protection. Additional vapor barrier protection may be necessary when installed on cold surfaces that are exposed to continuous high humidity.

### FLAME AND SMOKE RATING ▶

K-FLEX® INSUL-LOCK® DS WHITE in wall thicknesses of 2" (50 mm) and below has a flame spread rating of 25 or less and a smoke development rating of 50 or less as tested to ASTM E84, "Surface Burning Characteristics of Building Materials". It is acceptable for duct/plenum applications, meeting the requirements of NFPA 90A/B.

Numerical flammability ratings alone may not define the performance of products under actual fire conditions. They are provided only for use in the selection of products to meet limits specified when compared to a known standard.

#### SPECIFICATION COMPLIANCE

- ASTM C534 Type 1, Grade 1
- ASTM D1056-00-2B1
- New York City MEA 186-86-M Vol. V
- USDA Compliant
- CFIA Compliant
- RoHS Compliant
- ASTM E84 25/50-rated (to 2") - tested to UL 723, NFPA 255 and CAN/ULC S102-03
- NFPA No. 101 Class A Rating
- NFPA 90A, 90B
- Meets requirements of California ECB Title 24
- UL GREENGUARD® Gold Certified
- Meets energy code requirements of ASHRAE 90.1 and 189.1

Made in USA



Contains a Protective  
Antimicrobial Agent



# K-FLEX

**TECHNICAL DATA** ▶

PHYSICAL PROPERTIES		K-FLEX® INSUL-LOCK® DS WHITE	TEST METHODS
<b>Main Composition</b>		Flame-retarded NBR/PVC-based elastomeric foam	
<b>Thermal Conductivity (K)</b>	90°F (32°C) Mean Temp	0.258 (0.0372)	ASTM C177
	Btu-in/hr-Ft <sup>2</sup> -°F (W/mK) 75°F (24°C) Mean Temp	0.245 (0.0353)	
<b>Density</b>		3-6 lb/ft <sup>3</sup>	ASTM D1667
<b>Operating Temperature Range</b>		-40°F (-40°C) to +220°F (104°C)	ASTM C534
<b>Water Vapor Permeability (Dry Cup: Elastomeric Insulation)</b>		<0.06 perm-in	ASTM E96
<b>Water Vapor Permeability (Wet Cup: Glued Seam with Overlap)</b>		0.10 perm-in	ASTM E96
Seam Tape: High-tack, modified-acrylic pressure sensitive adhesive (foam-tearing bond) with polymeric scrim reinforcement that provides excellent adhesive/composite reinforcement, dimensional stability and conformability while maintaining maximum adhesion properties.			
Overlap Tape: Factory-applied tape comprised of flexible PVC strip, aggressive acrylic pressure sensitive adhesive (foam-tearing bond) and a polyethylene terephthalate (PET) release liner.			
<b>Water Absorption (Volume Change)</b>		< 0.20%	ASTM C209
<b>Flame Spread / Smoke Development (up to 2" wall)</b>		<25/50	ASTM E84
<b>Flammability</b>		Self-Extinguishing	ASTM D635
<b>Dimensional Stability</b>		<7% Linear Shrinkage	ASTM C534
<b>Hot Surface Performance (220°F)</b>		No Cracking or Delamination	ASTM C411
<b>Ozone Resistance</b>		Pass	ASTM D1171
<b>Odor Emissions</b>		No Objectionable Odor	ASTM C1304
<b>Chemical/Solvent/Oil/Grease Resistance</b>		Good	Compatibility Data Available on Request
<b>Flexibility</b>		Excellent Pass: Cold Crack Test at -40°F (-40°C)	ASTM C534 ASTM D1056
<b>Mildew Growth Resistance/Air Erosion</b>		Pass	UL 181, ASTM G21
<b>Corrosion Risk</b>		pH neutral: 6.6±0.04	DIN 1988
<b>Leachable Chlorides</b>		<0.05% water-soluble chloride ions	DIN 1988
<b>UV / Weather Resistance<sup>1</sup></b>		Pass	QUV Chamber Test
<b>Sound Transmission Class (1")</b>		13	ASTM E90

<sup>1</sup> Outdoor applications should be protected with an approved K-FLEX® coating or cladding for optimum performance.

THICKNESS RECOMMENDATIONS (TO PREVENT CONDENSATION)												
SERVICE TEMPERATURE	50°F (10°C)			35°F (2°C)			0°F (-18°C)			-20°F (-29°C)		
	Mild	Normal	Severe	Mild	Normal	Severe	Mild	Normal	Severe	Mild	Normal	Severe
<b>Pipe Size</b>												
<b>3/8" ID to 1-1/8" ID</b>	3/8"	3/8"	3/4"	3/8"	1/2"	3/4"	1/2"	3/4"	1-1/2"	1/2"	1"	1-1/2"
<b>1-3/8" ID to 3" IPS</b>	3/8"	3/8"	3/4"	3/8"	3/4"	1"	1/2"	1"	1-1/2"	3/4"	1-1/2"	1-1/2"
<b>4" IPS</b>	1/2"	1/2"	3/4"	1/2"	3/4"	1"	3/4"	1"	2"	3/4"	1-1/2"	2"

Thickness listed for the specified ranges will prevent condensation on indoor piping under the defined design conditions. Normal: 85°F and 70% R.H. Mild: Most air conditioned spaces and arid climates: 80°F and 50% R.H. Severe: Areas where excessive moisture is introduced or in poorly ventilated areas where the temperature may be depressed below the ambient: 90°F and 80% R.H. Contact K-FLEX technical support for additional information.

PIPE "R" VALUES PER SQUARE FOOT (ALL SIZES ARE NOMINAL)						
NOMINAL INSULATION I.D.	1/2" WALL	3/4" WALL	1" WALL	1-1/2" WALL	2" WALL	
3/8"	3.5	5.5	--	--	--	
1/2"	3.3	5.2	--	--	--	
5/8"	3.2	5.3	7.4	12.5	17.5	
3/4"	3.0	5.3	7.3	11.8	16.5	
7/8"	3.1	5.3	7.0	11.3	15.8	
1-1/8"	3.1	5.5	7.1	10.8	15.5	
1-3/8"	3.1	5.2	7.2	10.0	14.6	
1-5/8"	3.1	5.2	7.1	9.8	14.4	
1-1/2" IPS	2.6	4.4	6.2	8.9	13.6	
2-1/8"	3.0	4.9	6.6	9.2	13.4	
2" IPS	2.9	4.8	6.5	9.0	13.0	
2-1/2" IPS	3.0	4.6	6.3	8.6	12.4	
2-5/8"	3.1	4.7	6.4	8.8	12.7	
3-1/8"	3.0	4.6	6.2	8.4	12.2	
3" IPS	3.2	4.6	6.1	8.3	11.9	
3-5/8"	3.2	4.6	6.0	8.2	11.8	
4-1/8"	3.1	4.6	5.9	8.0	11.5	



US\_LEA\_INSUL-LOCK DS WHITE\_0417