



MEZ
INDUSTRIES
CONNECTORS

**Founded on Innovation
Sustained by Research and Development
Proven by Consistent Dependability and Service**

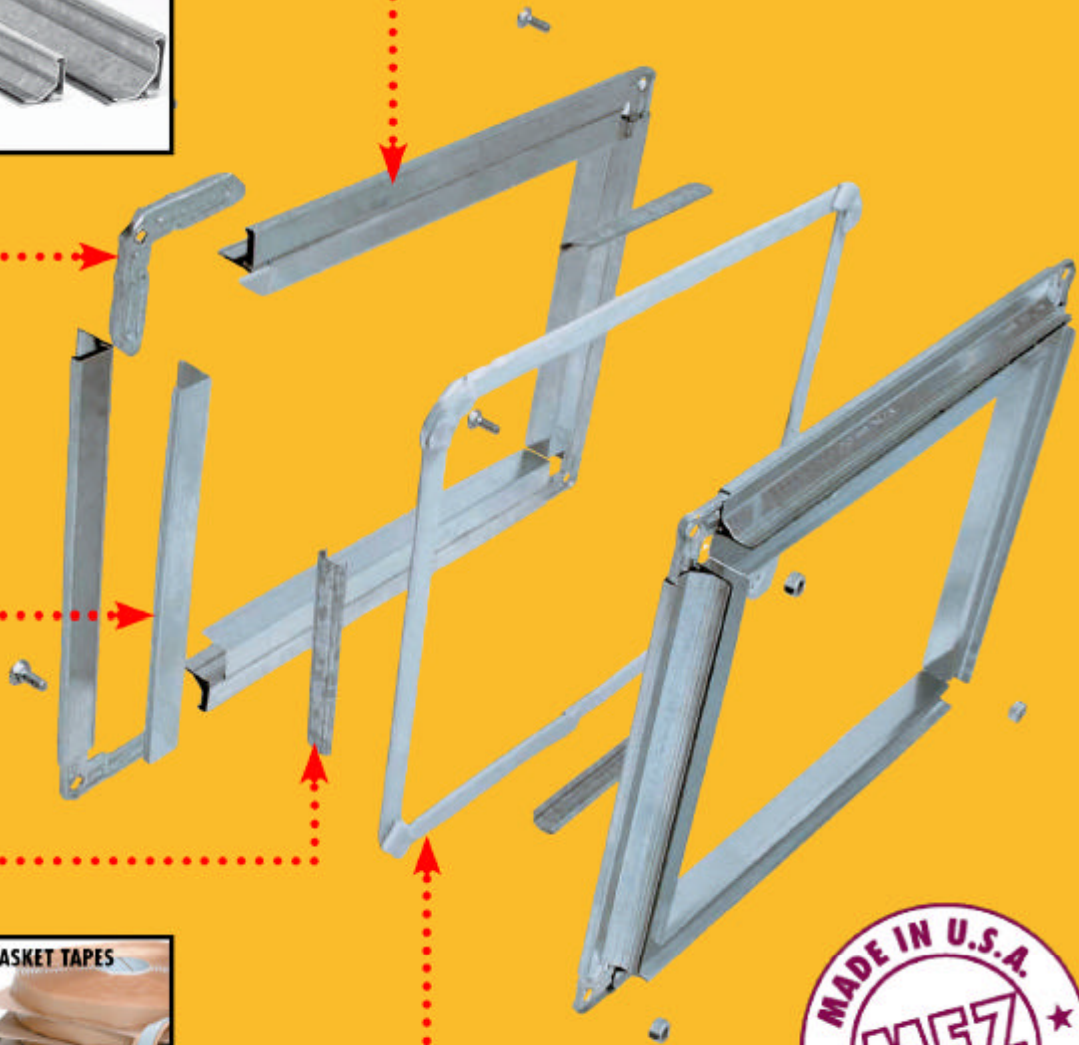


Member Number:
19871 ME, SE, &
AIR COND TONGING
CONTRACTORS
NATIONAL ASSOCIATION

SHEET METAL WORKERS
INTERNATIONAL ASSOCIATION

SPECIFICATION SHEETS

Mez Industries Flanges are available in three sizes equivalent to SMACNA **F, J** and **K** Ratings.



MADE IN USA



ACCESSORIES

1-800-597-9732

5115 Azusa Canyon Road
Baldwin Park, CA 91706 USA



The original transverse duct connectors

TABLE OF CONTENTS

Product Specification Sheet

Basic Use
Limitations
Composition & Materials
Technical Data
Availability
Guarantees
Technical Services

MEZ Connection Systems

MEZ "S" Series Flanges
MEZ "I" Series Flanges
MEZ Corners
MEZ Snap-Nosings
MEZ Cleats

MEZ Double Wall Construction

Standard Double Wall Application Detail

MEZ Accessories

MEZ Air Foil
MEZ Nipple
MEZ Clamp
MEZ Butyl Gasket Tape
MEZ Neoprene Gasket Tape
MEZ Wedge Clamp
MEZ C-Clamp
MEZ Buckle
MEZ Z-Bracket
MEZ L-Bracket

MEZ Fire Damper Connection

Installation Instructions

Tie Rod Construction

Installation Details

PRODUCT SPECIFICATION SHEET

PRODUCT DESCRIPTION



BASIC USE

The MEZ Transverse Duct Systems 120, 130 and 140 are specifically engineered to guarantee trouble-free assembly in a fraction of the time required by other systems.

MEZ's innovative and uniquely designed systems, coupled with an unparalleled line of accessories, such as the Snap-Nosing, assure a durable, airtight connection which is both technically and aesthetically impeccable.

LIMITATIONS

Recommended use 140 "I" System	26 Ga. Thru 14 Ga.
Recommended use 130 "I" & "S" Systems	26 Ga. Thru 16 Ga.
Recommended use 120 "I" & "S" Systems	26 Ga. Thru 20 Ga.

COMPOSITION & MATERIALS

MEZ Flanges are precision roll-formed from Galvanized Sheet Steel (ASTM A653) Material. The S- and I- Flanges are designed with an exclusive sealing method that consists of a non-hardening mastic applied at contact points to ensure a virtually airtight seal.

MEZ Corners are precision die-stamped from Galvanized Steel Plates with a beveled inside face and are designed with several cavities to allow the gasket material to fill the area without being forced out.

MEZ Snap-Nosing is a new advanced product roll formed from Galvanized Sheet Steel (ASTM A653) material to be used in conjunction with the MEZ I-Series Flanges (Insulated).

MEZ Cleats are roll-formed from first grade prime Galvanized Sheet Steel material and possess a uniquely designed arch for greater flexibility and spring-back action.

The MEZ Cleater is a unique tool, invented by MEZ Industries, to simplify the installation of cleats. It is so easy to use that one swing of the handle will attach the cleats in place, lining up the flanges and bringing them to the proper tension, while at the same time attaching the cleats in place.

TECHNICAL DATA

As published by the Sheet Metal and Air-Conditioning Contractors National Association (SMACNA), the HVAC Duct Construction Manuals are the essential and practical standards to be followed by all Engineers and Contractors.

Although SMACNA does not endorse any proprietary products, it does encourage the development and use of new products, providing they meet the high quality standards and performance criteria set forth by SMACNA.

MEZ Connector Systems 120, 130, and 140, approved by the City of Los Angeles, have been independently tested according to the functional criteria of SMACNA and have been proven to be equivalent to or surpass SMACNA's reinforcement ratings of "F", "J", "K", respectively.

AVAILABILITY

The MEZ Duct Connecting System and all its components are available through authorized distribution outlets nationwide. For a listing of an outlet in your area or for price information, please contact MEZ INDUSTRIES at: (800) 597-9732 or write to 5119 Azusa Canyon Road, Baldwin Park California 91706.

GUARANTEES

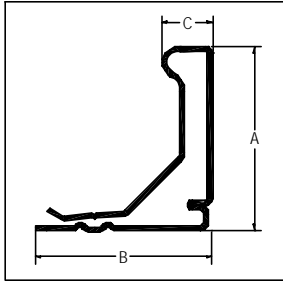
All MEZ products carry a manufacturer's guarantee against defective materials.

TECHNICAL SERVICES

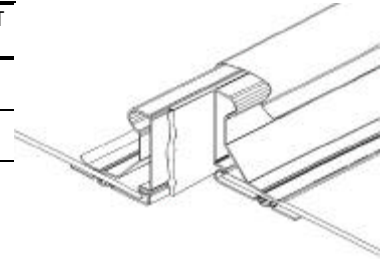
MEZ Industries provides step-by-step installation manuals and instruction booklets to all of its clients. Additionally technical personnel are available for training, should their expertise be required.

MEZ CONNECTION SYSTEMS

MEZ "S" Series FLANGES

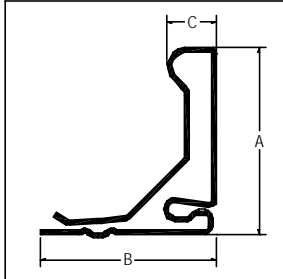


PART NO.	THICKNESS	A	B	C	REINFORCEMENT RATING
120-S	24 Ga.	1.06	1.12	0.35	F
130-S	20 Ga.	1.37	1.27	0.37	J

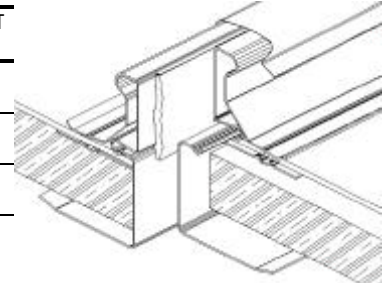


STAINLESS STEEL, ALUMINIZED STEEL & ALUMINUM AVAILABLE UPON REQUEST

MEZ "I" Series FLANGES

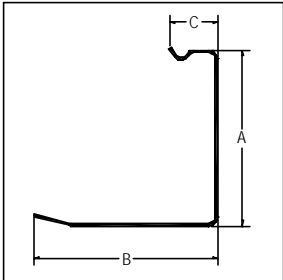


PART NO.	THICKNESS	A	B	C	REINFORCEMENT RATING
120-I	24 Ga.	1.06	1.12	0.35	F
130-I	20 Ga.	1.37	1.27	0.37	J
140-I	18 Ga.	1.82	1.75	0.45	K



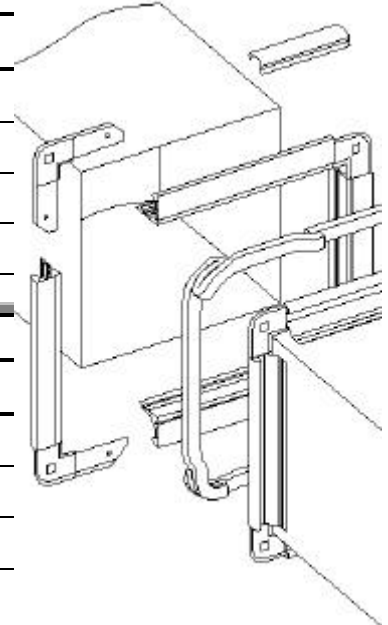
STAINLESS STEEL, ALUMINIZED STEEL & ALUMINUM AVAILABLE UPON REQUEST

MEZ SNAP-NOSINGS

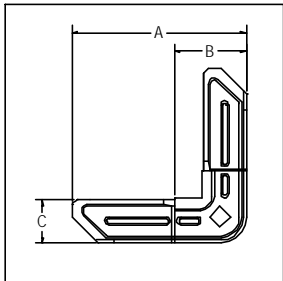


PART NO.	THICKNESS	A	B	C
50-N	28 Ga.	0.65	1.25	0.34
100-N	28 Ga.	1.15	1.25	0.34
150-N	28 Ga.	1.65	1.25	0.34
200-N	28 Ga.	2.15	1.25	0.34

STAINLESS STEEL, ALUMINIZED STEEL & ALUMINUM AVAILABLE UPON REQUEST



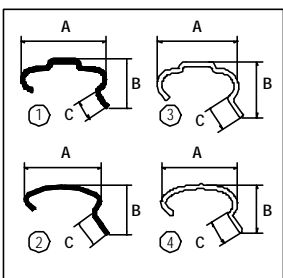
MEZ CORNERS



PART NO.	THICKNESS	A	B	C
220-C	18 Ga.	3.90	1.55	0.80
230-C	16 Ga.	4.37	1.86	1.07
240-C	14 Ga.	5.20	2.75	1.52

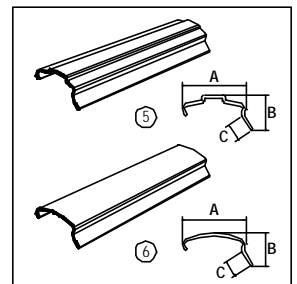
STAINLESS STEEL, ALUMINIZED STEEL & ALUMINUM AVAILABLE UPON REQUEST

MEZ CLEATS



PART NO.	THICKNESS	A	B	C
340-MC	18 Ga.	1.16	0.89	0.62
320-MC	22 Ga.	0.85	0.91	0.43
340-PC	0.0625	1.03	0.70	0.27
320-PC	0.0625	0.91	0.52	0.27
335-ACMC	22 Ga.	0.84	0.44	0.27
330-ACMC	22 Ga.	0.84	0.37	0.27
335-AFMC	22 Ga.	0.91	0.44	0.27
330-AFMC	22 Ga.	0.91	0.37	0.27

STAINLESS STEEL, ALUMINIZED STEEL & ALUMINUM AVAILABLE UPON REQUEST

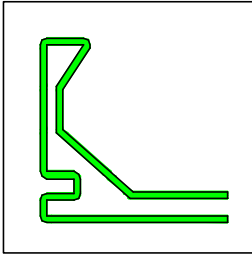


DOUBLE WALL

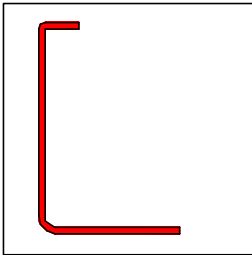
CONSTRUCTION

The efficiency of Mez Industries' superior design is especially evident in Double Wall Construction. The standard usage of Mez Components in Double Wall Applications includes utilizing Mez "I" Series Connectors in conjunction with Mez Snap Nosing & the Flat "S" Slip connector.

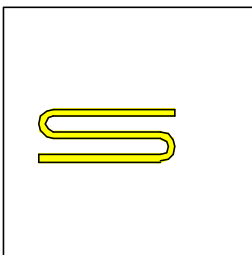
MEZ Double Wall Application & Components



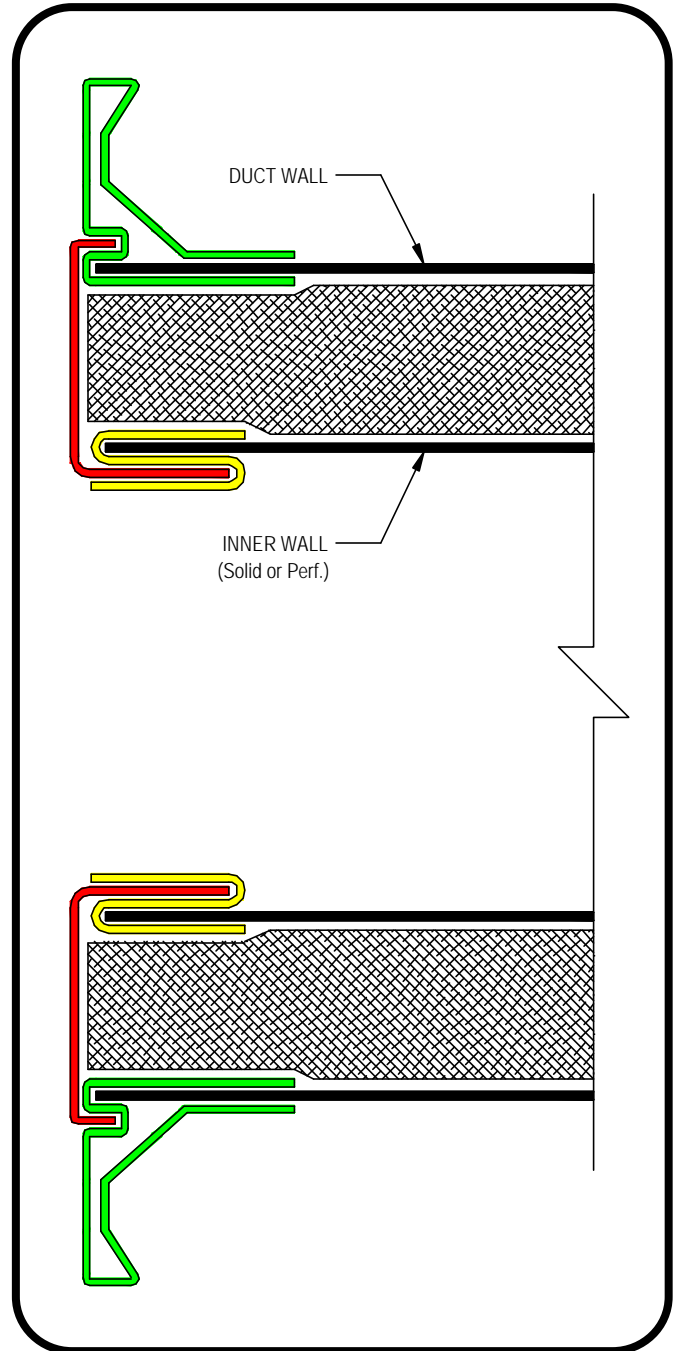
MEZ Flange "I" Series
Used for outer wall
connector with slot for
nosing.



MEZ Snap Nosing
(Size per liner thickness)
Used for insulation
protection, connects to
"S" Slip.

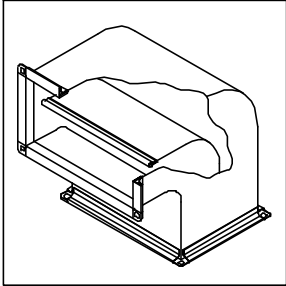


1" Flat "S" Slip
Used for connecting
Nosing to Inner Wall
Duct.

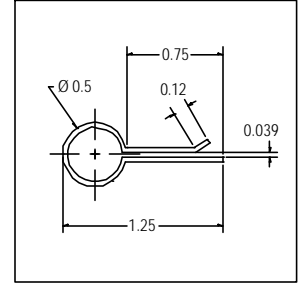


MEZ CONNECTION SYSTEMS

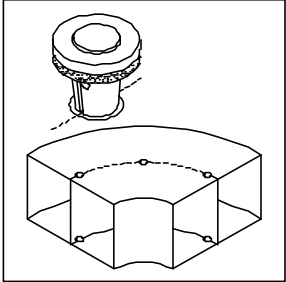
MEZ AIR FOIL®



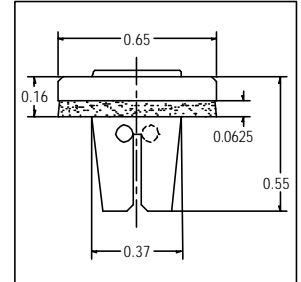
PART NO.	160
MATERIAL	Galvanized Steel
For use with Splitter Vanes	



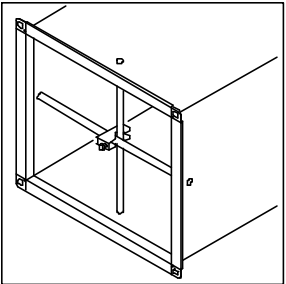
MEZ NIPPLE®



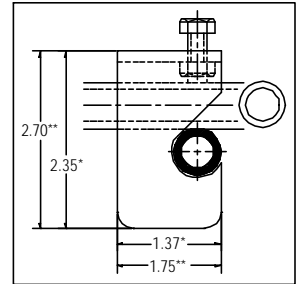
PART NO.	305										
MATERIAL	Galvanized Steel										
VALUE	<table border="1"> <thead> <tr> <th>THICKNESS</th> <th>EXTRACTION FORCE</th> </tr> </thead> <tbody> <tr> <td>24 Ga.</td> <td>118 lb.</td> </tr> <tr> <td>22 Ga.</td> <td>313 lb.</td> </tr> <tr> <td>20 Ga.</td> <td>537 lb.</td> </tr> <tr> <td>18 Ga.</td> <td>681 lb.</td> </tr> </tbody> </table>	THICKNESS	EXTRACTION FORCE	24 Ga.	118 lb.	22 Ga.	313 lb.	20 Ga.	537 lb.	18 Ga.	681 lb.
THICKNESS	EXTRACTION FORCE										
24 Ga.	118 lb.										
22 Ga.	313 lb.										
20 Ga.	537 lb.										
18 Ga.	681 lb.										



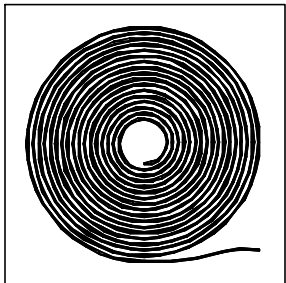
MEZ CLAMP®



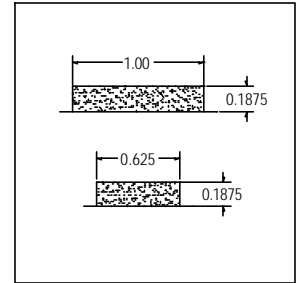
PART NO.	400
	For use with 3/8" Tie Rod
PART NO.	402
	For use with 1/2" Tie Rod
MATERIAL	Zinc-Plated Steel



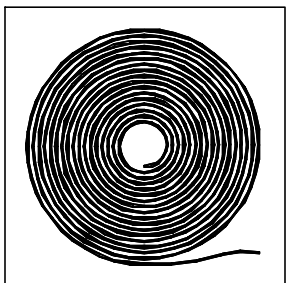
MEZ BUTYL GASKET TAPE®



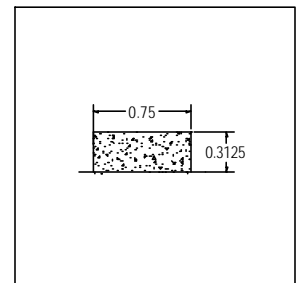
PART NO.	BTL 400 for systems 120 & 130						
PART NO.	BTL 401 for system 140						
<p>MEZ BUTYL GASKET Tape is a non-skinning, non-drying synthetic polymer-based sealing tape, capable of withstanding joint movement without cracking.</p>							
PHYSICAL PROPERTIES	<table border="1"> <tr> <td>SOLIDS</td> <td>100%</td> </tr> <tr> <td>COLOR</td> <td>Gray</td> </tr> <tr> <td>DENSITY</td> <td>1.4 gm/cc</td> </tr> </table>	SOLIDS	100%	COLOR	Gray	DENSITY	1.4 gm/cc
SOLIDS	100%						
COLOR	Gray						
DENSITY	1.4 gm/cc						



MEZ NEOPRENE GASKET TAPE®



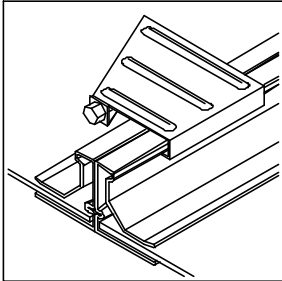
PART NO.	NPE 409 for Systems 120, 130 & 140										
<p>MEZ NEOPRENE GASKET Tape is a synthetic close cell, rubber-based sealing tape. Excellent for use as a gasket tape between connecting ductwork which has to be periodically taken apart for cleaning purposes.</p>											
PHYSICAL PROPERTIES	<table border="1"> <tr> <td>COLOR</td> <td>Black</td> </tr> <tr> <td>DENSITY</td> <td>(p.c.f.) average: 8-12</td> </tr> <tr> <td colspan="2">Water absorption by weight (max): 5%</td> </tr> <tr> <td colspan="2">Compression deflection (p.s.i.): 2-5</td> </tr> <tr> <td colspan="2">Temperature range: -40° F to 200° F</td> </tr> </table>	COLOR	Black	DENSITY	(p.c.f.) average: 8-12	Water absorption by weight (max): 5%		Compression deflection (p.s.i.): 2-5		Temperature range: -40° F to 200° F	
COLOR	Black										
DENSITY	(p.c.f.) average: 8-12										
Water absorption by weight (max): 5%											
Compression deflection (p.s.i.): 2-5											
Temperature range: -40° F to 200° F											



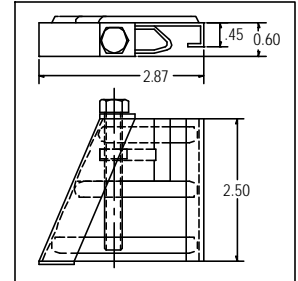
For more information on gasket material, refer to M.S.D.S Sheets

MEZ CONNECTION SYSTEMS

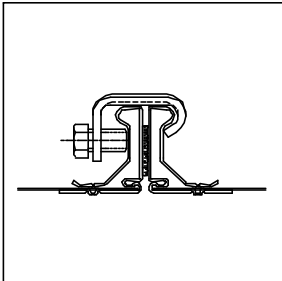
MEZ WEDGE CLAMP®



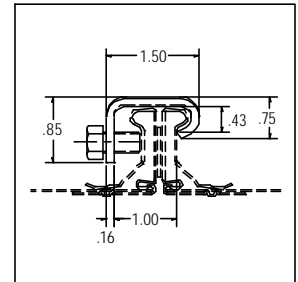
PART NO.	500
FOR SYSTEMS	120, 130, & 140
MAX. STRESS	562 lbs.
MATERIAL	Zinc-Plated Steel



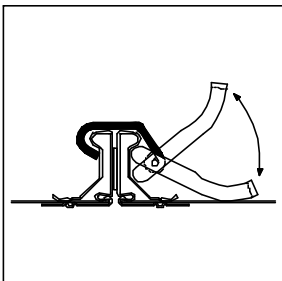
MEZ C-CLAMP®



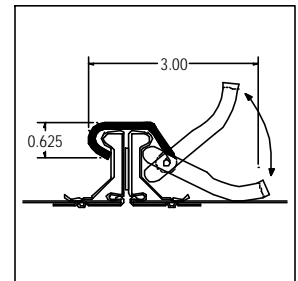
PART NO.	505
FOR SYSTEMS	120, 130, & 140
MAX. STRESS	586 lbs.
MATERIAL	Zinc-Plated Steel



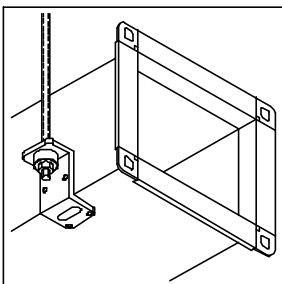
MEZ BUCKLE®



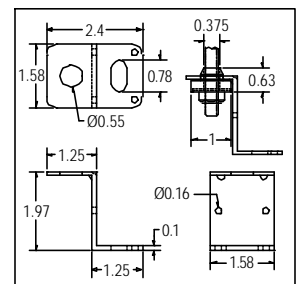
PART NO.	510
FOR SYSTEMS	120, 130
MAX. STRESS	562 lbs.
MATERIAL	Zinc-Plated Steel



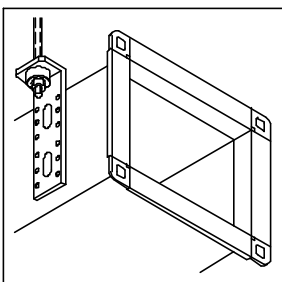
MEZ Z-BRACKET®



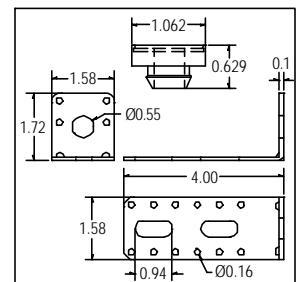
PART NO.	813
MAX. STRESS	135 lbs.
MATERIAL	Zinc-Plated Cold-Rolled Band Steel
ISOLATOR	PVC/Hardness 65 Shore



MEZ L-BRACKET®



PART NO.	817-S
MAX. STRESS	135 lbs.
MATERIAL	Zinc-Plated Cold-Rolled Band Steel
ISOLATOR	PVC/Hardness 65 Shore



INSTALLATION INSTRUCTIONS MEZ FIRE DAMPER CONNECTION

APPLICATION

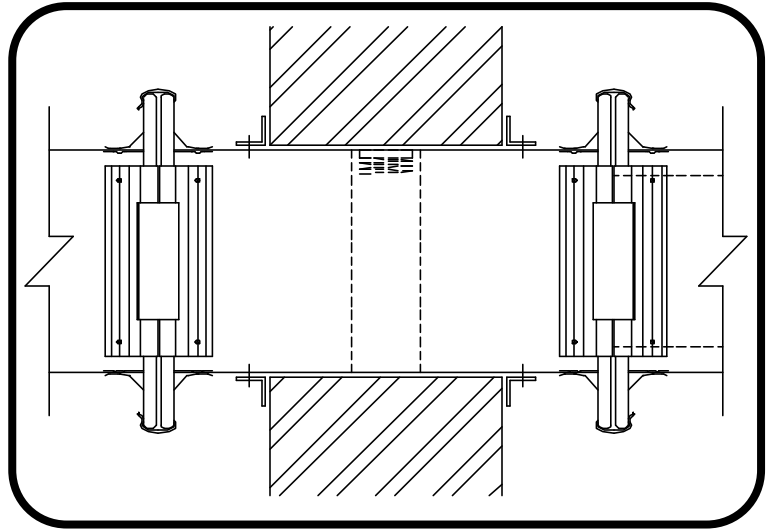
The MEZ manufactured DUCT CONNECTION can be used in place of slip joints for BREAKAWAY FIRE DAMPER CONNECTION

INSTALLATION

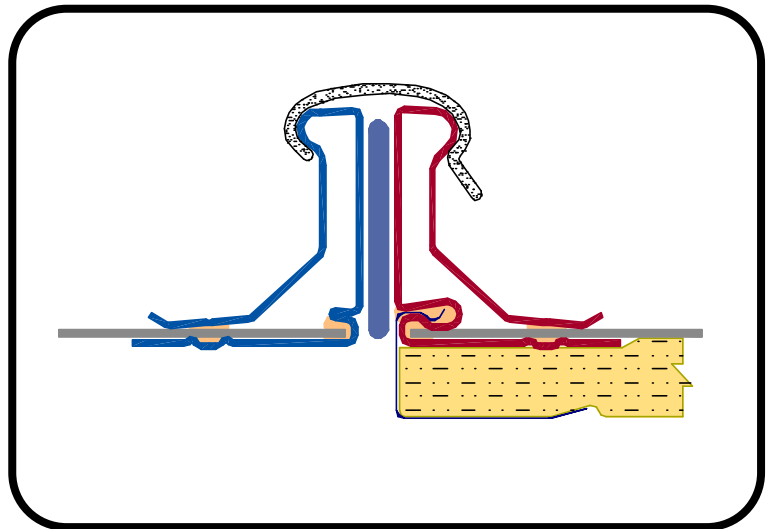
1. Insert manufactured corners into manufactured flanges and assemble as a frame. Two frames are required for each connection.
2. Attach one frame onto the duct and the other frame onto the fire damper sleeve – per manufacturer's recommended assembly instructions.
3. Apply the **NEOPRENE GASKET** on one of the frames - this allows the connection to break away. **DO NOT use BUTYL or any type of duct sealer in the connection.**
4. Align and butt the mating frames together. **DO NOT use bolts in corners.**
5. Attach the **PVC CLEATS** to the manufactured frames 12" on center with a minimum of one cleat per side. Cleats come in 6" lengths and are designed to melt away at 200° Fahrenheit. **Do not use any type of metal cleat or attachment other than PVC CLEATS.**

NOTES

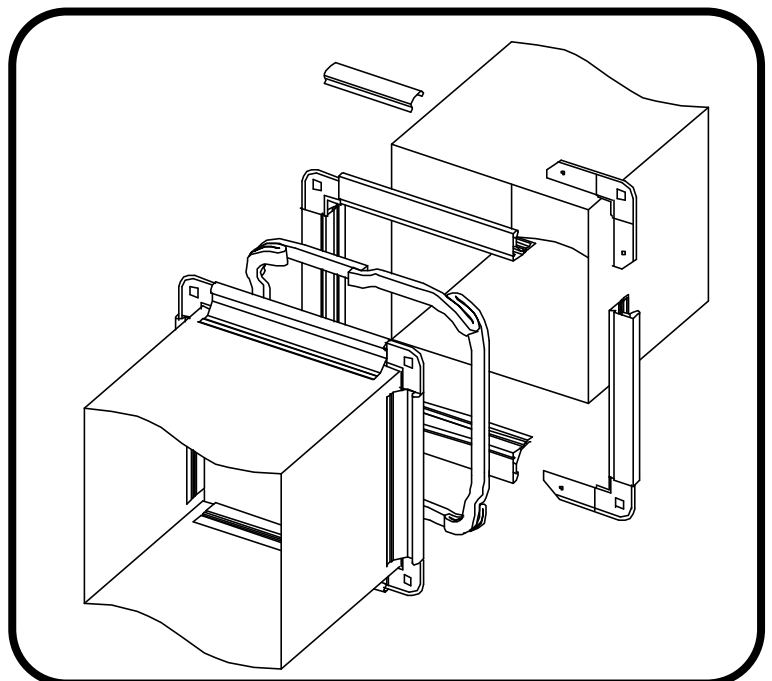
1. All **FIRE DAMPER CONNECTION** and **BREAKAWAY CONNECTION** details and information are in reference to SMACNA Fire Damper Guide, fourth edition, as well as UL Fire NC 1380.
2. **If duct is insulated, NOSING is required on all leading edges.**



DETAIL: FIRE DAMPER LISTED BY UL

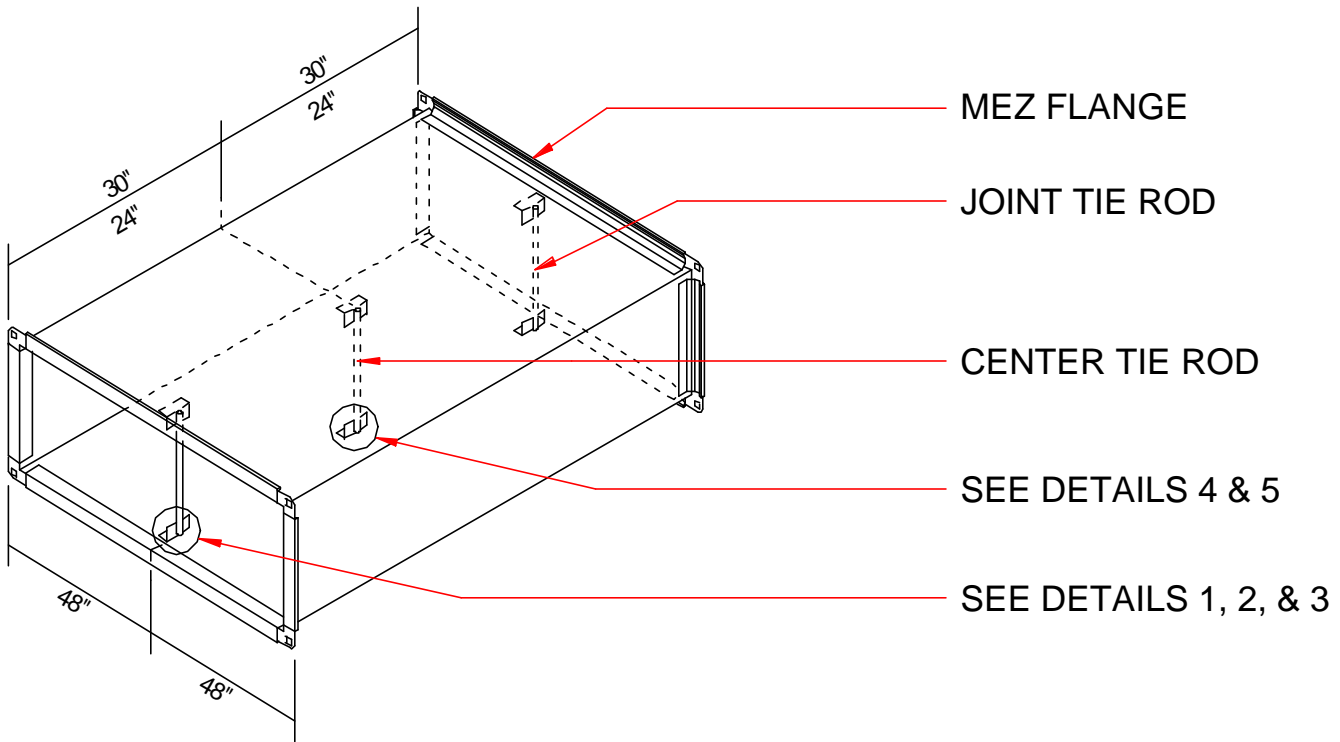


DETAIL: CLEAT ATTACHMENT

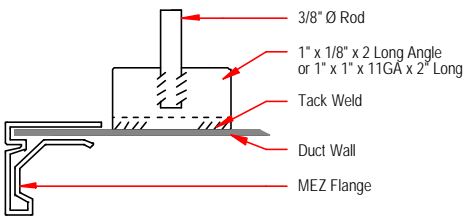


DETAIL: BREAKAWAY CONNECTION

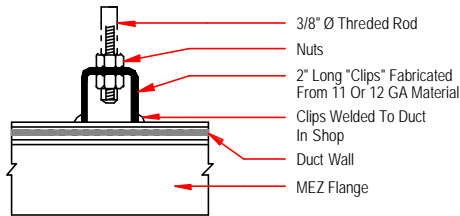
TIE ROD CONSTRUCTION



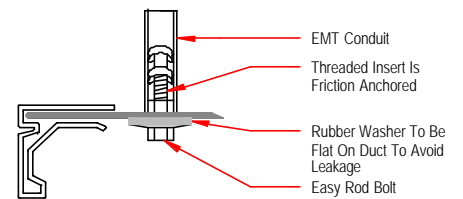
FOR DUCT OVER 96", USE MULTIPLE TIE RODS WITH A MAXIMUM SPACING OF 48"



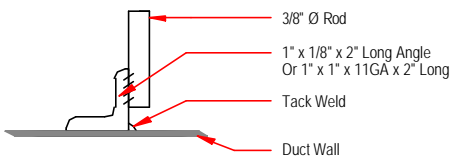
DETAIL 1
Use For Shop Fabricated Duct



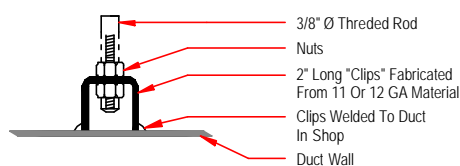
DETAIL 2
Use for "Knock Down" Duct



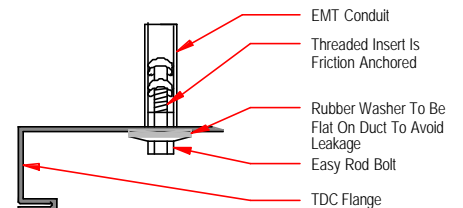
DETAIL 3
Easy Rod Bolt Assembly



DETAIL 4
Use For Shop Fabricated Duct



DETAIL 5
Use for "Knock Down" Duct



DETAIL 3
(Side View) shown with TDC Connector