

PRODUCT CATALOG

WHITE



- Fitting Covers
- Jacketing
- Cut & Curl
- LoSmoke[®] 25/50 Rated



Letter From The President



"By choosing to partner with Proto, you have made a decision to place your trust in our company. It is our constant goal to maintain that trust on a daily basis."

Dear Valued Customer,

I am pleased to introduce our new Proto Corporation catalog. Our mission in designing this catalog is to give you an invaluable resource that you and your customers can utilize on a daily basis. Inside you will find detailed information, helpful drawings, and easy-to-read charts. We realize the ordering process can be complex and hope our revised format will help make the experience more user-friendly.

Proto Corporation is a family-owned company committed to developing successful partnerships with our customers based on honesty, integrity and an unsurpassed commitment to customer service. We are proud to be a cutting-edge American manufacturing facility where product design, development and innovation distinguish us as an industry leader. At Proto Corporation, we are continually designing and evolving our product line for custom applications and are happy to assist you with any special requests you may have.

After 30 years in the industry, Proto Corporation has gained a reputation of excellence by offering superior products while working closely with our customers to form lifelong relationships. By choosing to partner with Proto, you have made a decision to place your trust in our company. It is our constant goal to maintain that trust on a daily basis.

Thank you for your continued confidence and support of our products.

Best wishes,

A handwritten signature in black ink, appearing to be 'CJ Botsolas, Jr.', written in a cursive style.

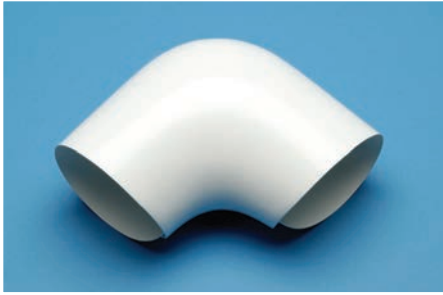
Chris "CJ" Botsolas, Jr.
President
Proto Corporation

Table Of Contents

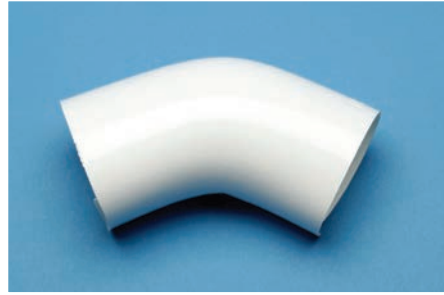
• Product Photo Index	A-E
• Sizing Chart for PVC Fitting Covers	2
• Short Radius 90° and 45° Elbow Covers	3
• Tee/Valve Covers and End Cap Covers	4
• One-piece Humped 90° Elbow Covers and Extended-Leg 90° Elbow Covers	5
• 90° Long Radius Elbow Covers	6
• Flanged Fitting Covers and Flanged Fitting Sizing Chart	8
• Reducer Fitting Covers	9
• Reducer End Cap Covers and Concentric Cone Reducer Covers	10
• "V" Series Mechanical Grooved Fitting Covers and Mechanical Grooved Coupling Covers	12
• "G" (Old-Style) Series Mechanical Grooved Fitting Covers	13
• Long Radius Mechanical Grooved Elbow Covers and Mechanical Grooved Lateral 45°-Y Covers	14
• Advanced Grooved System Covers	15
• Line Flange Covers and Extra-Long Line Flange Covers	16
• Ball Plug Valve Covers and Soil Pipe Hub Covers	17
• Roof Drain Sump Covers, Cast Iron 45°-Y Covers, Strainer Lateral 45°-Y Covers	18
• Strainer Covers and P-Trap Covers	19
• Flanged Gate Valve Covers	20
• PVC Accessories	20
• Tank Panels	21
• Protop® Tank Head Covers	22
• Bare Iron Pipe Fitting Covers	24
• Bare Copper Pipe Fitting Covers	25
• Bare Metal Covers, 90° Right Angle Covers, I-Beam Covers, 90° Sweep Covers	26
• PVC Jacketing: LoSMOKE® Rolls	28
• Cut and Curl Jacketing: LoSMOKE®	29
• PVC Sheets and Corner Edge Rolls	31
• Rod Covers and Cut and Curl for Bare Pipe	32

TABLE OF CONTENTS

Product Photo Index A



*Short Radius 90° Elbow Cover
(SR-90) - p.3*



*Short Radius 45° Elbow Cover
(SR-45) - p.3*



*Tee/Valve Cover
(TEE) - p.4*



*End Cap Cover
(EC) - p.4*



*Flat Round End Cap Cover
(FREC) - p.4*



*One-piece Humped 90° Elbow Cover
(C-90) - p.5*



*Extended-Leg 90° Elbow Cover
p.5*



*Long Radius 90° Elbow Cover
(LR-90) - p.6*



*Flanged 90° Elbow Cover
(S-90) - p.8*



*Flanged Tee Cover
(S-TEE) - p.8*



*Reducer 90° Elbow Cover
(R-90) - p.9*



*Reducer 45° Elbow Cover
(R-45) - p.9*

Product Photo Index B



*Reducer Tee Cover
(R-TEE) - p.9*



*Reducer End Cap Cover
(R-EC) - p.10*



*Concentric Cone Reducer Cover
(CCR) - p.10*



*Mechanical Grooved SR-90° Elbow
Cover "V" Series (V-90) - p.12*



*Mechanical Grooved SR-45° Elbow
Cover "V" Series (V-45) - p.12*



*Mechanical Grooved Tee Cover
"V" Series (V-TEE) - p.12*



*Mechanical Grooved Coupling
Cover (G-CPLG) - p.12*



*Mechanical Grooved SR-90° Elbow
Cover "G" Series (G-90) - p.13*



*Mechanical Grooved SR-45° Elbow
Cover "G" Series (G-45) - p.13*



*Mechanical Grooved Tee Cover "G"
Series (G-TEE) - p.13*



*Long Radius Mechanical Grooved 90°
Elbow Cover "G" Series (LR G-90) - p.14*



*Long Radius Mechanical Grooved 90°
Elbow Cover "V" Series (LR V-90) - p.14*

Product Photo Index C



Long Radius Mechanical Grooved 45° Elbow Cover "V" Series (LR V-45) - p.14



Mechanical Grooved Lateral 45°-Y Cover (G Y-45) - p.14



Advanced Grooved System Short Radius 90° Elbow Cover (AGS-90) - p.15



Advanced Grooved System Short Radius 45° Elbow Cover (AGS-45) - p.15



Advanced Grooved System Tee Cover (AGS TEE) - p.15



Advanced Grooved System Long Radius 90° Elbow Cover (AGS LR 90) - p.15



Line Flange Cover (LFC) - p.16



Extra-Long Line Flange Cover (EXL-LFC) - p.16



Ball Plug Valve Cover (BPV) - p.17



Soil Pipe Hub Cover (SPH) - p.17



Roof Drain Sump Cover (RDS) - p.18

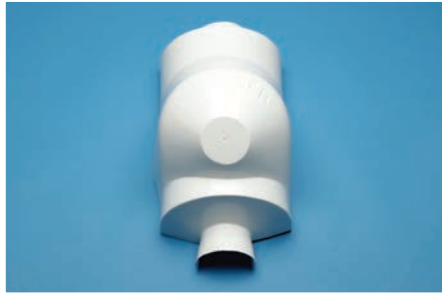


Cast Iron 45°-Y Cover (CIY) - p.18

Product Photo Index D



*Strainer Lateral Y-45° Cover
(SLY) - p.18*



*Strainer Cover
(STS) - p.19*



*Handicap P-Trap Cover
p.19*



*Standard P-Trap Cover
p.19*



*Deep-Seal P-Trap Cover
p.19*



*Flanged Gate Valve Cover
(FGV) - p.20*



*Adhesive Gun
p.20*



*Brush Tip
p.20*



*ProtoOne Specialty Adhesive
p.20*



*Celulon Caulk
p.20*



*White & Clear PVC Liquid Adhesive
p.20*



*White Stainless Steel Tacks
p.20*

Product Photo Index E



*White Vinyl Tape
p.20*



*Tank Head Cover
p.23*



*Bare Iron Pipe Screwed Short Radius
90° Elbow Cover - p.24*



*Bare Iron Pipe Screwed Short Radius
45° Elbow Cover - p.24*



*Bare Iron Pipe Screwed Tee Cover
p.24*



*Copper Bare Pipe 90° Elbow Cover
p.25*



*Copper Bare Pipe 45° Elbow Cover
p.25*



*Copper Bare Pipe Tee Cover
p.25*



*90° Sweep Cover
p.26*



*90° Right Angle Cover
p.26*



PVC FITTING COVERS

ASTM Insulation Standard C-585-76
USDA Authorized PVC
One & Two-Piece LoSMOKE® Grade
LoSMOKE® Grade Passes 25/50 ASTM E-84
Standard Light Gauge Commercial Thickness
Ultraviolet Stable High Gloss Indoor/Outdoor Grade White PVC

Contact your sales representative or our factory with any special requests you may have.

Sizing Charts For PVC Fitting Covers

Throughout the catalog use information in **BLUE** to place order.

Sizing chart is based on O.D. pipe insulation conforming to ASTM STD C-585-76.
 Combination short & long radius fitting covers are in compliance with ASTM Standards.
For insulation other than fiberglass, consider using 2-piece or C-series fittings.

SIZING CHART FOR IRON PIPE FITTING COVERS

Iron Pipe Size	Actual Pipe OD	Insulation Thickness											
		1/2"	OCF	1"	1 1/2"	2"	2 1/2"	3"	3 1/2"	4"	5"	5 1/2"	6"
3/8"	N/A	#2	N/A	#7	#9	N/A	N/A	N/A	N/A	N/A	For carved pipe insulation, measure the actual max O.D. and choose the fitting # from the chart on page 3.		
1/2"	0.840	3	N/A	7	10	#12	#15	#17	#18	#19			
3/4"	1.050	4	#5	7	10	12	15	17	18	19			
1"	1.315	5	N/A	9	11	13	15	17	18	19			
1 1/4"	1.660	6	7	9	12	13	15	17	18	19			
1 1/2"	1.900	7	N/A	10	12	15	17	18	19	20			
2"	2.375	9	9	11	13	15	17	18	19	20	#22	#23	#23
2 1/2"	2.875	10	10	12	15	17	18	19	20	21	22	23	24
3"	3.500	11	11	13	15	17	18	19	20	21	23	24	25
3 1/2"	4.000	12	12	15	17	18	19	20	21	22	23	24	25
4"	4.500	13	13	15	17	18	19	20	21	22	24	25	26
5"	5.563	15	15	17	18	19	20	21	22	23	25	26	27
6"	6.625	17	17	18	19	20	21	22	23	24	26	27	28
8"	8.625	19	19	20	21	22	23	24	25	26	28	29	30
10"	10.750	N/A	N/A	22	23	24	25	26	27	28	30	31	32
12"	12.750	N/A	N/A	24	25	26	27	28	29	30	32	34	34
14"	14.000	N/A	N/A	25	26	27	28	29	30	31	33	34	35
16"	16.000	N/A	N/A	27	28	29	30	31	32	33	35	36	37
18"	18.000	N/A	N/A	29	30	31	32	33	34	35	37	38	39
20"	20.000	N/A	N/A	31	32	33	34	35	36	37	39	40	41
22"	N/A	N/A	N/A	N/A	34	35	36	37	38	39	41	42	43
24"	24.000	N/A	N/A	N/A	36	37	38	39	40	41	43	44	45

The above are combination sizes that fit short and long radius screwed and welded elbows and tees. Fitting sizes in the yellow box will not fit most long radius 90° elbows properly. Order fitting covers for these long radius 90° sizes by specific pipe size and insulation thickness. The above combination sizes will fit all 45° elbows. To find the exact fitting number required for the max O.D., go to the chart on the following page, locate the max O.D. in the first column and choose the fitting number from the second column.

SIZING CHART FOR COPPER PIPE FITTING COVERS

Copper Tubing Size	Actual Pipe O.D.	Insulation Thickness											
		1/2"	OCF	1"	1 1/2"	2"	2 1/2"	3"	3 1/2"	4"	5"	5 1/2"	6"
3/8"	1/2"	N/A	N/A	#5	#9	#11	#13	#15	N/A	N/A	For carved pipe insulation, measure the actual max O.D. and choose the fitting # from the chart on page 3.		
1/2"	5/8"	#2	#3	7	9	11	13	15	N/A	N/A			
3/4"	7/8"	3	3	7	10	12	15	17	#18	#19			
1"	1 1/8"	4	5	7	10	12	15	17	18	19			
1 1/4"	1 3/8"	5	5	9	11	13	15	17	18	19			
1 1/2"	1 5/8"	6	7	9	12	13	15	17	18	19			
2"	2 1/8"	8	9	10	12	15	17	18	19	20	#22	#23	#23
2 1/2"	2 5/8"	9	10	11	13	15	17	18	19	20	22	23	24
3"	3 1/8"	10	11	12	15	17	18	19	20	21	23	24	25
3 1/2"	3 5/8"	11	11	13	15	17	18	19	20	21	23	24	25
4"	4 1/8"	12	13	15	17	18	19	20	21	22	24	25	26
5"	5 1/8"	14	15	17	18	19	20	21	22	23	25	26	27
6"	6 1/8"	16	17	18	19	20	21	22	23	24	26	27	28

Short Radius 90° & 45° Elbow Covers

List Prices

To determine proper fitting size, see sizing chart on Page 2.

SHORT RADIUS 90° ELBOW COVERS							
Fits O.D. Max.	Fitting Number	PVC With F/G Inserts		PVC Only No Inserts		**Fiberglass Inserts Only	
		LIST PRICE	PCS/ CTN	LIST PRICE	PCS/ CTN	LIST PRICE	PCS/ CTN
1 5/8"	#2	\$0.55	100	\$0.39	100	\$0.16	100
1 7/8"	#3	0.68	100	0.52	100	0.16	100
2 1/8"	#4	0.76	50	0.60	50	0.16	100
2 3/8"	#5	0.84	50	0.75	50	0.16	100
2 5/8"	#6	0.91	50	0.84	50	0.18	100
2 7/8"	#7	0.96	50	0.86	50	0.18	100
3 1/8"	#8	1.09	50	0.98	50	0.21	100
3 1/2"	#9	1.22	50	1.08	50	0.21	100
4"	#10	1.54	30	1.37	30	0.36	60
4 1/2"	#11	1.86	30	1.62	30	0.36	60
5"	#12	2.17	30	1.92	30	0.48	60
5 9/16"	#13	2.86	30	2.54	30	0.50	60
6 1/8"	#14	4.77	30	4.29	30	0.69	60
6 5/8"	#15	5.02	30	4.53	30	0.69	60
7 1/8"	#16	6.29	30	5.66	30	1.43	20
7 5/8"	#17	6.60	10	5.85	10	1.43	20
8 5/8"	#18	8.49	10	7.64	10	1.43	20
9 5/8"	#19	11.34	10	10.21	10	1.68	20
10 3/4"	#20	15.37	10	12.66	10	2.46	20
11 3/4"	#21	17.50	10	14.51	10	2.81	10
12 3/4"	#22	21.80	10	18.32	10	3.48	10
14"	#23	24.92	10	20.94	10	3.99	10
15"	#24	27.36	10	22.50	10	4.38	10
16"	#25	30.13	5	24.56	5	4.82	5
17"	#26	33.14	5	27.25	5	5.30	5
18"	#27	41.85	5	35.15	5	6.70	5
19"	#28	57.95	5	47.72	5	9.27	5
20"	#29	74.67	5	61.33	5	11.95	5
21"	#30	91.39	N/A	74.98	N/A	14.63	N/A
22"	#31	96.73	N/A	83.56	N/A	15.48	N/A
23"	*#32	101.76	N/A	92.51	N/A	16.28	N/A
24"	*#33	115.54	N/A	97.05	N/A	18.49	N/A
25"	*#34	127.20	N/A	106.85	N/A	20.35	N/A
26"	*#35	137.80	N/A	115.75	N/A	22.05	N/A
27"	*#36	148.40	N/A	124.66	N/A	23.74	N/A
28"	*#37	159.00	N/A	133.56	N/A	25.44	N/A
29"	*#38	169.60	N/A	142.46	N/A	27.14	N/A
30"	*#39	180.20	N/A	151.37	N/A	28.83	N/A

SHORT RADIUS 45° ELBOW COVERS							
Fits O.D. Max.	Fitting Number	PVC With F/G Inserts		PVC Only No Inserts		**Fiberglass Inserts Only	
		LIST PRICE	PCS/ CTN	LIST PRICE	PCS/ CTN	LIST PRICE	PCS/ CTN
1 5/8"	#2	\$0.55	100	\$0.39	100	\$0.16	100
1 7/8"	#3	0.68	100	0.52	100	0.16	100
2 1/8"	#4	0.76	50	0.60	50	0.16	100
2 3/8"	#5	0.84	50	0.75	50	0.16	100
2 5/8"	#6	0.91	50	0.84	50	0.18	100
2 7/8"	#7	0.96	50	0.86	50	0.18	100
3 1/8"	#8	1.09	50	0.98	50	0.21	100
3 1/2"	#9	1.22	50	1.08	50	0.21	100
4"	#10	1.54	30	1.37	30	0.36	60
4 1/2"	#11	1.86	30	1.62	30	0.36	60
5"	#12	2.17	30	1.92	30	0.48	60
5 9/16"	#13	2.86	30	2.54	30	0.50	60
6 1/8"	#14	4.77	30	4.29	30	0.69	60
6 5/8"	#15	5.02	30	4.53	30	0.69	60
7 1/8"	#16	6.29	30	5.66	30	1.43	20
7 5/8"	#17	6.60	10	5.85	10	1.43	20
8 5/8"	#18	8.49	10	7.64	10	1.43	20
9 5/8"	#19	11.34	10	10.21	10	1.68	20
10 3/4"	#20	13.92	10	12.65	10	2.28	10
11 3/4"	#21	15.35	10	13.95	10	2.51	10
12 3/4"	#22	17.13	10	15.57	10	2.80	10
14"	#23	19.48	10	17.79	10	3.19	10
15"	#24	20.99	10	19.09	10	3.43	10
16"	#25	23.99	5	21.80	5	3.92	5
17"	#26	27.01	5	24.55	5	4.42	5
18"	#27	33.00	5	30.00	5	4.80	5
19"	#28	45.00	5	40.92	5	7.36	5
20"	#29	51.00	5	46.35	5	7.42	5
21"	#30	59.99	N/A	54.53	N/A	9.84	N/A
22"	#31	67.47	N/A	61.33	N/A	11.03	N/A
23"	*#32	75.00	N/A	68.18	N/A	12.27	N/A
24"	*#33	82.48	N/A	74.98	N/A	13.49	N/A
25"	*#34	97.47	N/A	86.49	N/A	14.73	N/A
26"	*#35	104.57	N/A	90.10	N/A	15.95	N/A
27"	*#36	110.32	N/A	93.49	N/A	17.23	N/A
28"	*#37	118.20	N/A	100.17	N/A	18.03	N/A
29"	*#38	USE 39R-45	N/A	N/A	N/A	N/A	N/A
30"	*#39	134.20	N/A	114.48	N/A	20.92	N/A
31"	*#40	142.78	N/A	122.43	N/A	26.03	N/A
32"	*#41	151.37	N/A	130.38	N/A	28.15	N/A
33"	*#42	152.32	N/A	134.88	N/A	30.65	N/A

* Only available in 2-piece fittings.

** When ordering fiberglass inserts only, Proto provides a 1" thick insulation for sizes 2 through 12 and 1 1/2" thick insulation for sizes 13 and above.

• For insulation of 2" or more, please order additional inserts as needed.

• Products highlighted in yellow will come with separate box of inserts.

• Parts in red denote an extended lead time. Please contact factory for availability.

• Add 10% to list prices for less than full PCS/CTN for handling and set-up charge. Where no PCS/CTN is indicated, there is no extra charge.

• Heavy duty is recommended for outdoors. Contact factory for pricing.

Tee/Valve Covers & End Cap Covers

List Prices

To determine proper fitting size, see Sizing Chart on Page 2.



Tee/Valve Cover
(TEE)



End Cap Cover
(EC)



Flat Round End Cap Cover
(FREC)

TEE/VALVE COVERS

Fits O.D. MAX.	Fitting Number	PVC With F/G Inserts		PVC Only No Inserts		**Fiberglass Inserts Only	
		LIST PRICE	PCS/ CTN	LIST PRICE	PCS/ CTN	LIST PRICE	PCS/ CTN
1 5/8"	#2	\$1.04	25	\$0.93	25	\$0.15	25
1 7/8"	#3	1.18	25	1.03	25	0.17	25
2 1/8"	#4	1.28	25	1.16	25	0.19	25
2 3/8"	#5	1.40	25	1.25	25	0.19	25
2 5/8"	#6	1.54	25	1.38	25	0.23	25
2 7/8"	#7	1.67	25	1.49	25	0.23	25
3 1/8"	#8	1.92	25	1.73	25	0.31	25
3 1/2"	#9	2.18	25	1.96	25	0.31	25
4"	#10	2.58	25	2.31	25	0.45	25
4 1/2"	#11	3.21	25	2.89	25	0.45	25
5"	#12	3.86	25	3.49	25	0.53	25
5 9/16"	#13	5.13	25	4.61	25	0.83	25
6 1/8"	#14	6.74	25	6.06	25	0.72	25
6 5/8"	#15	8.34	15	7.50	15	1.34	15
7 1/8"	#16	13.48	15	12.13	15	2.36	15
7 5/8"	#17	14.78	15	13.30	15	2.36	15
8 5/8"	#18	17.98	10	16.18	10	3.39	10
9 5/8"	#19	21.20	10	19.07	10	3.39	10
10 3/4"	#20	23.84	5	21.45	5	3.82	5
11 3/4"	#21	26.48	5	23.83	5	4.24	5
12 3/4"	#22	29.13	5	26.21	5	4.66	5
14"	#23	31.80	5	28.61	5	5.09	5
15"	#24	34.44	5	30.98	5	5.51	5
16"	#25	37.10	5	33.37	5	5.94	5
17"	#26	39.74	5	35.73	5	6.36	5
18"	#27	43.69	5	39.33	5	7.00	5
19"	#28	47.67	5	42.91	5	7.63	5
20"	#29	51.64	5	47.28	5	8.37	5
21"	#30						
22"	#31						
23"	#32						
24"	#33						
25"	#34						
26"	#35						
27"	#36						
28"	#37						
29"	#38						
30"	#39						
31"	#40						
32"	#41						

SELECT LARGER SIZE
TEE / VALVE COVERS
FROM THE
REDUCER TEE CHART
AND PRICE LIST
ON PAGE 9.

END CAP COVERS - STANDARD OR FLAT ROUND

Fits O.D. MAX.	Fitting Number	PVC With F/G Inserts		PVC Only No Inserts		**Fiberglass Inserts Only	
		LIST PRICE	PCS/ CTN	LIST PRICE	PCS/ CTN	LIST PRICE	PCS/ CTN
1 5/8"	*#2	\$0.18	50	\$0.15	50	\$0.13	50
1 7/8"	*#3	0.20	50	0.17	50	0.16	50
2 1/8"	*#4	0.29	50	0.24	50	0.18	50
2 3/8"	*#5	0.34	50	0.29	50	0.25	50
2 5/8"	*#6	0.47	50	0.39	50	0.41	50
2 7/8"	*#7	0.56	50	0.47	50	0.49	50
3 1/8"	*#8	0.67	50	0.56	50	0.56	50
3 1/2"	*#9	0.76	50	0.64	50	0.65	50
4"	*#10	0.86	50	0.72	50	0.74	50
4 1/2"	*#11	0.95	50	0.80	50	0.82	50
5"	*#12	1.03	50	0.86	50	0.87	50
5 9/16"	*#13	1.42	25	1.19	25	1.21	25
6 1/8"	*#14	1.98	25	1.65	25	1.70	25
6 5/8"	*#15	2.57	25	2.14	25	2.15	25
7 1/8"	*#16	3.12	25	2.60	25	2.64	25
7 5/8"	*#17	3.43	25	2.86	25	2.87	25
8 5/8"	*#18	3.97	25	3.31	25	3.36	25
9 5/8"	*#19	4.48	25	3.73	25	3.83	25
10 3/4"	*#20	5.20	25	4.34	25	4.31	25
11 3/4"	*#21	5.83	25	4.85	25	4.80	25
12 3/4"	*#22	6.17	15	5.14	15	5.26	15
14"	*#23	6.95	15	5.79	15	5.78	15
15"	*#24	7.80	15	6.50	15	6.39	15
16"	*#25	8.51	15	7.09	15	7.01	15
17"	*#26	9.69	15	8.08	15	8.00	15
18"	*#27	11.27	15	9.39	15	9.44	15
19"	*#28	13.45	15	11.20	15	11.24	15
20"	*#29	14.44	15	12.03	15	11.98	15
21"	*#30	15.47	5	12.89	15	12.70	5
22"	*#31	17.67	5	14.72	5	14.52	5
23"	*#32	19.07	5	15.89	5	15.69	5
24"	*#33	21.18	5	17.65	5	17.47	5
25"	*#34	22.58	5	18.82	5	18.55	5
26"	*#35	23.91	5	19.93	5	19.66	5
27"	*#36	25.25	5	21.04	5	20.78	5
28"	*#37	26.58	5	22.15	5	21.89	5
29"	*#38	27.92	5	23.27	5	22.95	5
30"	*#39	29.26	5	24.38	5	24.06	5
31"	*#40	30.53	5	25.44	5	25.12	5
32"	*#41	33.07	5	27.56	5	27.19	5

* Flat Round End Cap Covers are not available in these sizes.

** When ordering fiberglass inserts only with Tee/Valve Covers, Proto provides 1" thick insulation for sizes 2 through 12 and 1 1/2" thick insulation for sizes 13 and above.

- For insulation of 2" or more, please order additional inserts as needed.
- Add 10% to list prices for less than full PCS/CTN for handling and set-up charge.
- Heavy duty is recommended for outdoors. Contact factory for pricing.

One-Piece Humped Elbow Covers ("C" Series) & Extended-Leg 90° Elbow Covers

List Prices

ONE-PIECE HUMPED ELBOW COVERS "C" Series (to fit carved fittings) PVC Only / No Inserts		
FITTING NUMBER	LIST PRICE	PCS/CTN
7C-90	\$0.86	50
9C-90	1.08	50
10C-90	1.37	30
11C-90	1.62	30
12C-90	1.92	30
13C-90	2.54	30
15C-90	4.53	30
17C-90	5.85	10
18C-90	7.64	10
19C-90	10.21	10
20C-90	12.66	10
21C-90	14.51	10
22C-90	18.32	10

For carved pipe insulation, measure the actual max O.D. and choose the fitting # from the chart on page 3.

Two-piece "H" Series covers are also available. Prices are 10% higher than standard short radius 90s, 45s and Tees.

EXTENDED-LEG 90° ELBOW COVER			
LIST PRICES			
Fits O.D. MAX.	PVC COVER SIZE	TWO-PIECE SR 90'S NO INSERTS	ONE-PIECE WELDED SR 90'S NO INSERTS
4 1/2"	#11	\$4.90	\$5.70
6 1/8"	#14	\$12.90	\$15.05
6 5/8"	#15	\$13.60	\$15.85
7 5/8"	#17	\$17.55	\$20.60
8 5/8"	#18	\$22.95	\$26.75
9 5/8"	#19	\$30.65	\$35.75
10 3/4"	#20	\$38.00	\$44.35
	PVC COVER SIZE	TWO-PIECE LR 90'S NO INSERTS	ONE-PIECE WELDED LR 90'S NO INSERTS
	6" x 2 1/2"	\$43.55	\$50.80

Please allow approximately a one week lead time for welded fittings.

- Add 10% to list prices for less than full PCS/CTN for handling and set-up charge. Where no PCS/CTN is indicated, there is no extra charge.
- Heavy duty is recommended for outdoors. Contact factory for pricing.



"C" Series Short Radius 90° Elbow Cover (C-90)



Two-piece 90° Elbow Cover (H-90)



Two-piece Tee (H-TEE)



Extended-Leg 90° Elbow Cover

90° Long Radius Elbow Covers

List Prices



Long Radius 90° Elbow Cover
(LR-90)

1 1/2 X Pipe Size = Centerline Radius.
One-Piece and Two-Piece Covers
are the same price.

*22" X 1 1/2" reduces to 22" X 1"
**20" X 3" reduces to 20" X 2 1/2"
***20" X 4" reduces to 20" X 3 1/2"

Note: Industry standard for the 2 1/2" X 1 1/2" to 2 1/2" X 2" thick insulation is the same as the 3" X 1 1/2" to 2" thick insulation. Proto fitting covers for the 2 1/2" IPS LR-90° are the actual O.D. of the pipe and insulation thickness and are smaller than the 3" IPS covers. Customers need to verify the actual O.D. before placing an order for this item.

- When installing rigid insulation, 2-piece HLR-90's are recommended (when available) for a better fit.
- Products highlighted in yellow will come with a separate box of inserts.
- **Parts in red denote an extended lead time. Please contact factory for availability.**
- Add 10% to list prices for less than full PCS/CTN for handling and set-up charge.
- Heavy duty is recommended for outdoors. Contact factory for pricing.
- For insulation of 2" or more, please order additional inserts as needed.

90° LONG RADIUS ELBOW COVERS				
No. of Pcs.	Fitting Size	List Price W/ Inserts	List Price W/O Inserts	PCS/CTN
1/2" Thick Insulation				
1	2 X 1/2	\$1.33	\$1.14	25
1	2 1/2 X 1/2	1.97	1.70	25
1	3 X 1/2	2.86	2.04	25
1	4 X 1/2	3.53	3.07	25
1	5 X 1/2	5.57	4.82	25
1	6 X 1/2	8.31	7.46	25
1	8 X 1/2	13.39	11.55	10
1" Thick Insulation				
1,2	2 X 1	\$1.76	\$1.54	25
1	2 1/2 X 1	2.55	2.23	25
1,2	3 X 1	3.17	2.76	25
1,2	4 X 1	5.26	4.58	25
1,2	5 X 1	6.44	5.61	15
1,2	6 X 1	9.78	8.51	25
1,2	8 X 1	14.11	12.27	10
1,2	10 X 1	16.91	14.70	10
1,2	12 X 1	22.56	19.62	10
1,2	14 X 1	32.43	28.20	5
1,2	16 X 1	56.41	49.06	5
2	18 X 1	71.92	62.54	5
2	20 X 1	91.75	83.39	5
2	22 X 1*	N/A	N/A	N/A
2	24 X 1	112.47	100.56	5
4	30 X 1	211.36	156.14	5
1 1/2" Thick Insulation				
2	1 1/2 X 1 1/2	\$2.62	\$2.28	25
1,2	2 X 1 1/2	2.93	2.54	25
1,2	2 1/2 X 1 1/2	4.26	3.71	25
1,2	3 X 1 1/2	5.27	4.59	25
2	3 1/2 X 1 1/2	6.15	5.35	25
1,2	4 X 1 1/2	7.02	6.11	25
1,2	5 X 1 1/2	8.80	7.65	25
1,2	6 X 1 1/2	11.59	10.08	25
1,2	8 X 1 1/2	15.45	13.44	10
1,2	10 X 1 1/2	22.56	19.62	10
1,2	12 X 1 1/2	29.62	25.76	5
1,2	14 X 1 1/2	40.89	35.56	5
2	16 X 1 1/2	60.63	52.72	5
2	18 X 1 1/2	78.34	68.13	5
2	20 X 1 1/2	95.77	87.06	5
2	22 X 1 1/2*	117.80	96.78	5
2	24 X 1 1/2	146.28	104.24	5
4	26 X 1 1/2	204.79	178.08	5
4	30 X 1 1/2	215.55	161.23	5
4	36 X 1 1/2	295.53	241.26	5
2" Thick Insulation				
1,2	2 X 2	\$6.11	\$5.09	5
1,2	2 1/2 X 2	7.00	5.83	5
1,2	3 X 2	7.34	6.12	5
1,2	4 X 2	9.79	8.16	25
1,2	5 X 2	12.23	10.20	15
1,2	6 X 2	16.81	14.01	10
1,2	8 X 2	22.07	18.39	10
1,2	10 X 2	25.76	21.47	10
1,2	12 X 2	35.31	29.43	5
1,2	14 X 2	47.09	39.24	5
2	16 X 2	70.64	58.87	5
2	18 X 2	91.80	76.50	5
2	20 X 2	108.88	90.74	5
2	24 X 2	146.28	104.24	5
4	30 X 2	218.31	163.61	5

90° Long Radius Elbow Covers (cont.)

List Prices

90° LONG RADIUS ELBOW COVERS (cont'd)				
No of Pcs	Fitting Size	List Price W/ Inserts	List Price W/O Inserts	PCS/ CTN
2 1/2" Thick Insulation				
2	3 X 2 1/2	\$10.13	\$7.63	25
2	4 X 2 1/2	13.26	10.21	5
2	5 X 2 1/2	16.43	12.65	5
1, 2	6 X 2 1/2	18.87	14.51	5
1, 2	8 X 2 1/2	27.23	20.94	5
1, 2	10 X 2 1/2	32.52	25.02	5
1, 2	12 X 2 1/2	41.65	32.04	5
2	14 X 2 1/2	61.80	52.05	5
2	16 X 2 1/2	83.74	65.72	5
2	18 X 2 1/2	100.59	84.80	5
2	20 X 2 1/2**	N/A	N/A	N/A
2	24 X 2 1/2	152.85	113.95	5
3" Thick Insulation				
2	3 X 3	\$13.26	\$10.21	5
2	4 X 3	16.43	12.65	5
2	5 X 3	18.86	14.51	5
1,2	6 X 3	23.81	18.32	5
1,2	8 X 3	29.87	22.98	5
1,2	10 X 3	35.83	27.56	5
1	12 X 3	43.05	33.11	5
1	14 X 3	63.94	49.18	5
2	16 X 3	92.46	71.13	5
2	18 X 3	103.64	79.72	5
2	20 X 3**	128.64	98.96	5
2	24 X 3	159.40	122.62	5
4	30 X 3	223.87	169.60	5
3 1/2" Thick Insulation				
2	4 X 3 1/2	\$19.59	\$14.51	10
2	6 X 3 1/2	28.26	20.94	5
2	8 X 3 1/2	34.15	25.30	5
2	10 X 3 1/2	47.45	35.15	5
1	12 X 3 1/2	60.57	46.98	5
2	14 X 3 1/2	79.40	58.82	5
2	16 X 3 1/2	115.05	85.22	5
2	18 X 3 1/2	129.14	95.67	5
4	20 X 3 1/2***	N/A	N/A	N/A
2	24 X 3 1/2	198.63	147.14	5
4" Thick Insulation				
2	5 X 4	\$28.26	\$20.94	5
2	6 X 4	31.02	22.98	5
2	8 X 4	37.21	27.56	5
2	10 X 4	52.18	38.66	5
1	12 X 4	65.56	51.31	5
2	10 X 5	68.90	62.54	5
4	20 X 4***	168.51	124.83	5

1 1/2 X Pipe Size = Centerline Radius. One-Piece and Two-Piece Covers are the same price.

*22" X 1 1/2" reduces to 22" X 1"

**20" X 3" reduces to 20" X 2 1/2"

***20" X 4" reduces to 20" X 3 1/2"

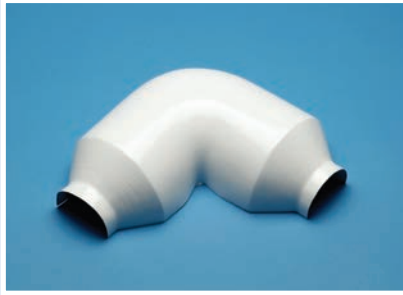
Note: Industry standard for the 2 1/2" X 1 1/2" to 2 1/2" X 2" thick insulation is the same as the 3" X 1 1/2" to 2" thick insulation. Proto fitting covers for the 2 1/2" IPS LR-90° are the actual O.D. of the pipe and insulation thickness and are smaller than the 3" IPS covers. Customers need to verify the actual O.D. before placing an order for this item.

- When installing rigid insulation, 2-piece HLR-90's are recommended (when available) for a better fit.
- Products highlighted in yellow will come with a separate box of inserts.
- Parts in red denote an extended lead time. Please contact factory for availability.
- Add 10% to list prices for less than full PCS/CTN for handling and set-up charge.
- Heavy duty is recommended for outdoors. Contact factory for pricing.
- For insulation of 2" or more, please order additional inserts as needed.

Flanged Fitting Covers ("S" Series)

List Prices and Flanged Sizing Chart

Used wherever metal portion of fitting protrudes, not allowing sufficient insulation; usually on screwed or welded fittings.



Flanged 90° Elbow Cover
(S-90)



Flanged Tee Cover
(S-TEE)

- Parts in red denote an extended lead time. Please contact factory for availability.
- Add 10% to list prices for less than full PCS/CTN for handling and set-up charge.
- Heavy duty is recommended for outdoors. Contact factory for pricing.

FLANGED 90° ELBOW COVERS & TEE COVERS

Tee Body Length	Fitting Number	Insul. O.D.	List Price		PCS/CTN	Red. End Ftg. #
			PVC Covers Only SR 90	Tee		
10 1/2"	13S	5 9/16"	\$4.35	\$7.16	15	#7
N/A	14S	6 1/8"	Use #15S+Cut Red. End To Size			#9
12"	15S	6 5/8"	8.00	11.08	10	#9
N/A	16S	7 1/8"	Use #17S+Cut Red. End To Size			#9
13 1/2"	17S	7 5/8"	8.59	17.81	10	#9
15 1/2"	18S	8 5/8"	10.02	21.94	10	#9
17"	19S	9 5/8"	15.26	25.44	10	#11
18 1/4"	20S	10 3/4"	17.76	28.62	10	#11
20"	21S	11 3/4"	20.99	31.80	10	#11
21"	22S	12 3/4"	24.70	35.51	5	#12
23"	23S	14"	28.04	38.16	5	#15
22 3/8"	24S	15"	30.42	40.39	5	#15
25"	25S	16"	33.34	44.52	5	#15
20 3/4"	26S	17"	36.33	48.34	5	#18
28"	27S	18"	42.40	55.33	5	#22
40"	28S	19"	58.30	67.67	5	#20
38"	29S	20"	68.90	84.59	5	#22
46"	30S	21"	79.50	101.50	5	#22
38"	32S	23"	102.82	136.74	5	#26
54"	33S	24"	115.54	153.70	5	#25
47"	34S	25"	N/A	164.30	5	#27
48"	35S	26"	137.80	174.90	5	#27
44"	37S	28"	N/A	196.10	5	#29
60"	39S	30"	180.20	N/A	5	#27

For fitting number, use chart below.

FLANGED SIZING CHART

Iron Pipe Size	FLG. O.D.	Recommended Flange Pipe Insul.	Lower Than 250 lb. Pressure Rated Flanged Fittings					
			1/2" Thk.	1" Thk.	1 1/2" Thk.	2" Thk.	2 1/2" Thk.	3" Thk.
1"	4 1/4"	4 1/8"	#13S	#15S	#17S	#18S	#19S	#20S
1 1/4"	4 5/8"	4"	#13S	#15S	#17S	#18S	#19S	#20S
1 1/2"	5"	5 1/8"	#15S	#17S	#18S	#19S	#20S	#21S
2"	6"	6 1/8"	#17S	#18S	#19S	#20S	#21S	#22S
2 1/2"	7"	6"	#17S	#18S	#19S	#20S	#21S	#22S
3"	7 1/2"	7"	#18S	#19S	#20S	#21S	#22S	#23S
3 1/2"	8 1/2"	8"	#19S	#20S	#21S	#22S	#23S	#24S
4"	9"	8"	#19S	#20S	#21S	#22S	#23S	#24S
5"	10"	9"	#20S	#21S	#22S	#23S	#24S	#25S
6"	11"	10"	#21S	#22S	#23S	#24S	#25S	#26S
8"	13 1/2"	14"	#24S	#25S	#26S	#27S	#28S	#29S
10"	16"	16"	#26S	#27S	#28S	#29S	#30S	#31S
12"	19"	19"	#29S	#30S	#31S	#32S	#33S	#34S
14"	21"	21"	#31S	#32S	#33S	#34S	#35S	#36S
16"	23 1/2"	24"	#34S	#35S	#36S	#37S	#38S	#39S
18"	25"	25"	#35S	#36S	#37S	#38S	#39S	#40S
20"	27 1/2"	28"	#38S	#39S	#40S	#41S	#42S	#43S
24"	32"	32"	#42S	#43S	#44S	#45S	#46S	#47S

Reducer Fitting Covers

List Prices

REDUCER 90° & 45° ELBOW COVERS & TEE COVERS

Tee Body Length	Fitting Number	Insul. O.D.	List Price SR 90	List Price 45 (All)	List Price Tee	PCS/CTN	Reducer End Ftg. #	
4 1/4"	3R	1 7/8"	\$1.06	\$1.06	\$1.75	25	#2	
4 3/4"	5R	2 3/8"	1.38	1.38	2.07	25	#3	
5 3/8"	7R	2 7/8"	1.59	1.59	2.44	25	#3	
N/A	8R	3 1/8"	Use #9R + Cut Red. End To Size					#3
6"	9R	3 1/2"	1.86	1.86	2.92	25	#3	
6 1/2"	10R	4"	2.07	2.07	3.23	25	#3	
7"	11R	4 1/2"	2.76	2.76	4.08	15	#3	
7 1/2"	12R	5"	3.50	3.50	5.78	15	#7	
10 1/2"	13R	5 9/16"	4.35	4.35	7.16	15	#7	
N/A	14R	6 1/8"	Use #15R + Cut Red. End To Size					#9
12"	15R	6 5/8"	8.00	8.00	11.08	10	#9	
N/A	16R	7 1/8"	Use #17R + Cut Red. End To Size					#9
13 1/2"	17R	7 5/8"	8.59	8.59	17.81	10	#9	
15 1/2"	18R	8 5/8"	10.02	10.02	21.94	10	#9	
17"	19R	9 5/8"	15.26	13.14	25.44	10	#11	
18 1/4"	20R	10 3/4"	17.76	16.43	28.62	10	#11	
20"	21R	11 3/4"	20.99	18.82	31.80	10	#11	
21"	22R	12 3/4"	24.70	22.58	35.51	5	#12	
23"	23R	14"	28.04	25.60	38.16	5	#15	
22 3/8"	24R	15"	30.42	27.72	40.39	5	#15	
25"	25R	16"	33.34	30.48	44.52	5	#15	
20 3/4"	26R	17"	36.33	33.92	48.34	5	#18	
28"	27R	18"	42.40	39.22	55.33	5	#22	
40"	28R	19"	58.30	49.13	67.67	5	#20	
38"	29R	20"	68.90	59.36	84.59	5	#22	
46"	30R	21"	79.50	72.08	101.50	5	#22	
44"	31R	22"	90.10	86.92	119.78	5	#23	
38"	32R	23"	102.82	99.64	136.74	5	#26	
54"	33R	24"	115.54	111.30	153.70	5	#25	
47"	34R	25"	127.20	121.90	164.30	5	#27	
48"	35R	26"	137.80	132.50	174.90	5	#27	
62"	36R	27"	148.40	143.10	N/A	5	#25	
44"	37R	28"	159.00	148.40	196.10	5	#29	
N/A	39R	30"	180.20	N/A	N/A	5	#27	

To determine proper fitting size, see sizing chart on Page 2.



Reducer 90° Elbow Cover (R-90)



Reducer 45° Elbow Cover (R-45)



Reducer Tee Cover (R-TEE)

Add 15% to list prices if fiberglass inserts are desired.

- Parts in red denote an extended lead time. Please contact factory for availability.
- Add 10% to list prices for less than full PCS/CTN for handling and set-up charge.
- Heavy duty is recommended for outdoors. Contact factory for pricing.
- For insulation of 2" or more, please order additional inserts as needed.

Reducer End Cap Covers & Concentric Cone Reducer Covers

List Prices



Reducer End Cap Cover
(R-EC)



Concentric Cone Reducer Cover
(CCR)

REDUCER END CAP COVERS* PVC ONLY / NO INSERTS

Max Fitting O.D.	Fitting Number	List Price
1 5/8"	2	\$0.24
1 7/8"	3	0.29
2 1/8"	4	0.38
2 3/8"	5	0.43
2 5/8"	6	0.66
2 7/8"	7	0.73
3 1/8"	8	0.89
3 1/2"	9	0.95
4"	10	1.08
4 1/2"	11	1.20
5"	12	1.29
5 9/16"	13	1.91
6 1/8"	14	2.48
6 5/8"	15	3.21
7 1/8"	16	3.90
7 5/8"	17	4.29
8 5/8"	18	4.97
9 5/8"	19	5.60
10 3/4"	20	6.51
11 3/4"	21	7.28
12 3/4"	22	7.72
14"	23	8.68
15"	24	9.75
16"	25	11.69
17"	26	12.12
18"	27	15.51
19"	28	18.44
20"	29	20.35
21"	30	21.31
22"	31	23.84
23"	32	24.41
24"	33	26.48
25"	34	27.43
26"	35	28.30
27"	36	29.66
28"	37	31.41

When ordering, specify both largest and smallest fitting number needed to cover.

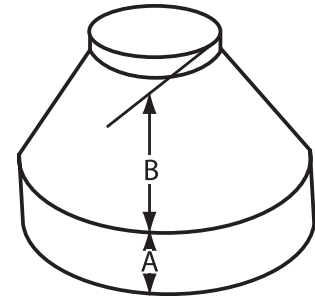
Priced by the higher number.

*Contact the factory for lead time.

CONCENTRIC CONE REDUCER COVERS PVC ONLY / NO INSERTS

Fitting Number	List Price	PCS/CTN	A	B
#6-3	\$1.86	25	2 1/2"	1 7/8"
#9-2	2.12	25	2"	1 3/4"
#12-2	3.18	25	3"	3"
#15-5	5.30	20	3"	3 3/4"
#18-9	8.48	15	3"	4 3/8"
#22-13	13.78	10	4"	6"
#28-15	21.73	5	6 1/2"	10 1/2"
#39-27	41.87	5	8 1/2"	9"

Concentric Cone Reducer Sizing Diagram



- Add 10% to list prices for less than full PCS/CTN for handling and set-up charge.
- Heavy duty is recommended for outdoors. Contact factory for pricing.

Mechanical Grooved Fitting Covers

"V" Series and "G" Series



"V" SERIES VICTAULIC & GRUVLOK FITTING COVERS
Featuring innovative *step reducer ends* that can be custom fitted at the jobsite, saving time and money.

"G" SERIES VICTAULIC & GRUVLOK FITTING COVERS
Featuring *tapered reducer ends* for ease of installation in *tight spaces*.

"AGS" SERIES VICTAULIC FITTING COVERS
Featuring the *new two-bolt system*.

MECHANICAL GROOVED
FITTING COVERS

Mechanical Grooved Fitting Covers & Coupling Covers ("V" Series)

List Prices



Mech. Grooved 90° Elbow Cover (V-90)



Mech. Grooved 45° Elbow Cover (V-45)



Mech. Grooved Tee Cover (V-TEE)



Mech. Grooved Coupling Cover (G-CPLG)

V-90°				V-45°				V-TEE			
IPS Size	Insul. Thk	List Price W/ Insert	List Price W/O Insert	IPS Size	Insul. Thk	List Price W/ Insert	List Price W/O Insert	IPS Size	Insul. Thk	List Price W/ Insert	List Price W/O Insert
3/4" V	1 1/2"	\$4.13	\$3.55	3/4" V	1 1/2"	\$3.66	\$2.97	3/4" V	1 1/2"	\$5.35	\$4.51
1" V	1 1/2"	4.35	3.71	1" V	1 1/2"	3.87	3.29	1" V	1 1/2"	5.67	4.82
1 1/4" V	1 1/2"	5.25	4.45	1 1/4" V	1 1/2"	4.66	3.98	1 1/4" V	1 1/2"	6.84	5.83
1 1/2" V	1 1/2"	5.51	4.72	1 1/2" V	1 1/2"	4.93	4.19	1 1/2" V	1 1/2"	7.16	6.10
2" V	2"	8.69	8.11	2" V	2"	7.74	6.57	2" V	2"	11.29	9.59
2 1/2" V	2"	9.65	8.22	2 1/2" V	2"	8.59	7.31	2 1/2" V	2"	12.56	10.71
3" V	2"	10.81	9.22	3" V	2"	9.65	8.22	3" V	2"	14.05	11.98
3 1/2" V	2"	12.51	10.65	3 1/2" V	2"	10.18	8.69	3 1/2" V	2"	14.89	12.14
4" V	2"	13.94	11.87	4" V	2"	12.40	10.55	4" V	2"	18.18	15.42
5" V	2"	17.33	14.73	5" V	2"	15.42	13.09	5" V	2"	20.03	17.07
6" V	2"	25.60	21.78	6" V	2"	22.79	17.28	6" V	2"	29.63	25.18
8" V	2"	27.88	23.69	8" V	2"	24.80	21.09	8" V	2"	32.12	27.30
10" V	2"	35.67	30.32	10" V	2"	31.75	26.98	10" V	2"	46.38	39.43
12" V	2"	51.30	43.62	12" V	2"	45.69	38.80	12" V	2"	66.67	56.71
6" V	3"	26.77	22.74	6" V	3"	23.85	20.25	6" V	3"	31.00	39.43
8" V	3"	31.69	26.92	8" V	3"	28.20	23.96	8" V	3"	41.23	35.03
10" V	3"	43.51	36.99	10" V	3"	38.74	32.91	10" V	3"	54.08	46.03
12" V	3"	57.24	48.65	12" V	3"	50.93	43.30	12" V	3"	74.41	63.28

14" and above come only in G's. Please look to the "G" Series charts on page 13 if 14" or above is desired.

MECHANICAL GROOVED COUPLING COVERS

Fitting Number	List Price W/ Insert	List Price W/O Insert	PCS/CTN
#5-6 G-CPLG	\$3.23	\$2.92	25
#7 G-CPLG	3.60	3.29	25
#8-9 G-CPLG	3.98	3.66	25
#10-11-12 G-CPLG	5.54	4.99	25
#13 G-CPLG	6.24	5.62	25
#14-15 G-CPLG	7.63	6.87	25
#16-17 G-CPLG	9.02	8.12	25
#18 G-CPLG	11.11	10.43	25
#19-20 G-CPLG	13.20	11.87	15
#21-22 G-CPLG	16.65	14.99	15
#23-24 G-CPLG	20.84	18.75	15
*#25-26 G-CPLG	27.76	24.99	10
*#27-30 G-CPLG	35.46	31.91	5
*#31-33 G-CPLG	41.66	37.52	5
*#34-36 G-CPLG	51.68	46.53	5
*#37-39 G-CPLG	62.70	56.45	5

To determine proper fitting size, see sizing chart on Page 2.

***When determining what to order, please verify if covering the new Victaulic AGS System. If so, see Line Flange Covers on page 16.**

- Add 10% to list prices for less than full PCS/CTN order for handling and set-up charge for coupling covers only.
- Heavy duty is recommended for outdoors. Contact factory for pricing.
- For insulation of 2" or more, please order additional inserts as needed.

"Old-Style" Mechanical Grooved Fitting Covers ("G" Series)

List Prices

SR G-90°			
IPS Size	Insul. Thk	List Price W/ Insert	List Price W/O Insert
3/4" & 1" G	1 1/2"	\$4.13	\$3.55
1 1/4" & 1 1/2" G	1 1/2"	5.25	4.45
2" G	1 1/2"	8.69	8.11
2 1/2" G	1 1/2"	9.65	8.22
3" G	1 1/2"	10.81	9.22
3 1/2" G	1 1/2"	12.51	10.65
4" G	1 1/2"	13.94	11.87
5" G	1 1/2"	17.33	14.73
6" G	2"	25.60	21.78
8" G	2"	27.88	23.69
10" G	2"	35.67	30.32
12" G	2"	51.30	43.62
*14" G	2 1/2"	63.60	54.06
*16" G	3 1/2"	86.55	73.56
*18" G	3 1/2"	119.04	101.18
*20" G	3 1/2"	145.06	123.33

SR G-45°			
IPS Size	Insul. Thk	List Price W/ Insert	List Price W/O Insert
3/4" & 1" G	1 1/2"	\$3.66	\$2.97
1 1/4" & 1 1/2" G	1 1/2"	4.66	3.98
2" G	1 1/2"	7.74	6.57
2 1/2" G	1 1/2"	8.59	7.31
3" G	1 1/2"	9.65	8.22
3 1/2" G	1 1/2"	10.18	8.69
4" G	1 1/2"	12.40	10.55
5" G	1 1/2"	15.42	13.09
6" G	2"	22.79	17.28
8" G	2"	24.80	21.09
10" G	2"	31.75	26.98
12" G	2"	45.69	38.80
*14" G	2 1/2"	56.60	48.12
*16" G	3 1/2"	77.06	65.46
*18" G	3 1/2"	105.95	90.05
*20" G	3 1/2"	129.11	109.76

G-TEE			
IPS Size	Insul. Thk	List Price W/ Insert	List Price W/O Insert
3/4" & 1" G	1 1/2"	\$5.35	\$4.51
1 1/4" & 1 1/2" G	1 1/2"	6.84	5.83
2" G	1 1/2"	11.29	9.59
2 1/2" G	1 1/2"	12.56	10.71
3" G	1 1/2"	14.05	11.98
3 1/2" G	1 1/2"	14.89	12.14
4" G	1 1/2"	18.18	15.42
5" G	1 1/2"	20.03	17.07
6" G	2"	29.63	25.18
8" G	2"	32.12	27.30
10" G	2"	46.38	39.43
12" G	2"	66.67	56.71
*14" G	2 1/2"	82.68	70.28
*16" G	3 1/2"	112.52	95.67
*18" G	3 1/2"	154.76	131.55
*20" G	3 1/2"	188.57	160.27



"Old-Style" Mech. Grooved 90° Elbow Cover (G-90)



"Old-Style" Mech. Grooved 45° Elbow Cover (G-45)



"Old-Style" Mech. Grooved Tee Cover (G-TEE)

***When determining what to order, please verify if covering the new Victaulic AGS System. If so, see page 15.**

- Parts in red denote an extended lead time. Please contact factory for availability.
- Heavy duty is recommended for outdoors. Contact factory for pricing.
- For insulation of 2" or more, please order additional inserts as needed.



Long Radius G-90° Elbow Cover
(LR G-90)



Long Radius V-90° Elbow Cover
(LR V-90)



Long Radius V-45° Elbow Cover
(LR V-45)



Mech. Grooved Lateral 45°-Y Cover
(G Y-45)

90° & 45° LONG RADIUS MECH. GROOVED ELBOW COVERS

Size X (Max. Insul.)	List Price W/ Insert	List Price W/O Insert
3 X 1 1/2 LR G-90	\$14.36	\$13.20
4 X 1 1/2 LR G-90*	17.81	15.32
6 X 2 LR G-90*	27.35	25.33
8 X 2 1/2 LR G-90*	43.20	39.27
10 X 2 1/2 LR G-90* (17 1/4" center to end)	63.87	57.88
12 X 2 1/2 LR G-90* (20 1/2" center to end)	72.79	65.72
**14 X 2 1/2 LR G-90	81.72	73.55
**16 X 3 1/2 LR G-90*	116.28	110.98
**18 X 3 1/2 LR G-90	130.22	119.09
**20 X 3 1/2 LR G-90	144.16	127.20
2 X 2 LR V-90	12.67	11.50
3 X 2 LR V-90	14.36	13.20
4 X 2 LR V-90*	17.81	15.32
5 X 2 LR V-90*	26.15	22.58
10 x 2 1/2 LR V-90 (15" center to end)	63.87	57.88
12 X 2 1/2 LR V-90 (18" center to end)	72.79	65.72
2 X 2 LR V-45	10.50	9.75
3 X 2 LR V-45	12.75	11.65
**14 X 2 1/2 LR G-45	79.40	69.85
**18 X 3 1/2 LR G-45	115.11	105.90
*20 X 3 1/2 LR G-45	132.32	118.85

*90° long radius covers will fit 45° long radius elbows by cutting the body section down the middle and overlapping to fit.

** When determining what to order, please verify if covering the new Victaulic AGS System. If so, see page 15.

MECHANICAL GROOVED LATERAL 45°-Y COVERS

Fitting Size	List Price W/ Insert	List Price W/O Insert
3" G Y-45	\$15.45	\$12.88
4" G Y-45	22.77	18.97
5" G Y-45	26.58	22.15
6" G Y-45	32.94	27.45
8" G Y-45	39.30	32.75
10" G Y-45	47.34	40.81
12" G Y-45	60.31	51.99

- Parts in red denote an extended lead time. Please contact factory for availability.
- Heavy duty is recommended for outdoors. Contact factory for pricing.
- For insulation of 2" or more, please order additional inserts as needed.

Advanced Grooved System Covers

List Prices

Victaulic has developed a new Advanced Grooved System (AGS) on all short radius and long radius 90s, 45s, tees and couplings that are 14" and larger. The width of the coupling has changed from 3" to 4.75". The diameters have also changed as a result of the new two-bolt system. Until **AGS coupling covers** are available, please use **line flange covers** instead.

In order to prevent any sizing issues, please check with the installer as to the kind of couplings being used. The old style couplings are still available and may be ordered, if needed.

ADVANCED GROOVED SYSTEM COVERS (AGS)			
SR 90			
IPS Size	Insul. Thk	List Price W/ Insert	List Price W/O Insert
14"	2 1/2"	\$102.75	\$93.45
16"	3"	138.50	117.70
18"	3"	147.25	135.95
20"	3"	156.85	144.30
LR 90			
IPS Size	Insul. Thk	List Price W/ Insert	List Price W/O Insert
14"	1 1/2"	\$123.60	\$110.40
16"	3"	146.20	135.10
18"	3"	158.50	144.95
SR 45			
IPS Size	Insul. Thk	List Price W/ Insert	List Price W/O Insert
14"	2 1/2"	\$99.25	\$87.50
16"	3"	123.30	104.75
18"	3"	137.65	126.15
LR 45			
IPS Size	Insul. Thk	List Price W/ Insert	List Price W/O Insert
14"	2 1/2"	\$115.20	\$106.70
16"	3"	140.45	132.85
18"	3"	151.95	138.75
TEE			
IPS Size	Insul. Thk	List Price W/ Insert	List Price W/O Insert
14"	2 1/2"	\$110.35	\$101.45
16"	3"	140.75	134.70
18"	3"	171.15	162.35



Advanced Grooved System 90° Elbow Cover (AGS-90)



Advanced Grooved System 45° Elbow Cover (AGS-45)



Advanced Grooved System Tee Cover (AGS-TEE)



Advanced Grooved System Long Radius 90° Elbow Cover (AGS LR-90)

- Please contact the factory for lead times of AGS products.
- Heavy duty is recommended for outdoors. Contact factory for pricing.
- For insulation of 2" or more, please order additional inserts as needed.

Line Flange Covers & Extra-Long Line Flange Covers

List Prices

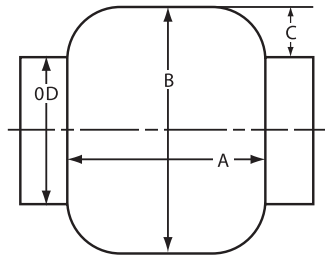


Line Flange Cover (LFC)



Extra-Long Line Flange Cover (EXL-LFC)

Line Flange Cover Sizing Diagram



EXTRA-LONG LINE FLANGE COVERS

Fitting Size Pipe x Insul.Thk.	List Price PVC Cover	PCS/ CTN	"B" Insul. O.D.	"A"
1/2 X 1	\$15.90	20	5 9/16"	10"
3/4 X 1	16.96	20	6 5/8"	10"
1 X 1	18.02	20	7 5/8"	10"
1 1/2 X 1	19.61	15	8 5/8"	11 1/2"
2 X 1	20.14	15	8 5/8"	11 1/2"
2 1/2 X 1	20.67	15	9 5/8"	11 1/2"
3 X 1	21.20	15	10 3/4"	15"
4 X 1	25.44	10	12 3/4"	15"
6 X 1	29.68	10	15"	20 1/2"
8 X 1	34.98	5	17"	22 1/2"
10 X 1	39.22	5	20"	22 1/2"
12 X 1	43.46	5	22"	22 1/2"
1/2 X 1 1/2	16.96	20	6 5/8"	10"
3/4 X 1 1/2	18.02	20	7 5/8"	10"
1 X 1 1/2	18.55	20	7 5/8"	10"
1 1/4 X 1 1/2	19.61	15	9 5/8"	11 1/2"
1 1/2 X 1 1/2	20.67	15	9 5/8"	11 1/2"
2 X 1 1/2	21.20	15	9 5/8"	11 1/2"
2 1/2 X 1 1/2	22.26	10	11 3/4"	15"
3 X 1 1/2	23.32	10	11 3/4"	15"
4 X 1 1/2	26.50	10	14"	15"
6 X 1 1/2	30.74	5	16"	20 1/2"
8 X 1 1/2	36.04	5	18"	22 1/2"
10 X 1 1/2	40.28	5	21"	22 1/2"
12 X 1 1/2	53.00	5	24"	24 1/2"
1/2 X 2	18.02	20	7 5/8"	10"
3/4 X 2	19.61	15	8 5/8"	10"
1 X 2	20.14	15	9 5/8"	10"
1 1/2 X 2	21.20	15	10 3/4"	11 1/2"
2 X 2	21.73	10	10 3/4"	11 1/2"
2 1/2 X 2	24.38	10	10 3/4"	11 1/2"
3 X 2	25.44	10	12 3/4"	15"
4 X 2	29.68	5	15"	15"
6 X 2	36.04	5	17"	20 1/2"
8 X 2	37.10	5	19"	22 1/2"
10 X 2	43.46	5	22"	22 1/2"
12 X 1	51.94	5	22"	22 1/2"
12 X 2	54.06	5	25"	24 1/2"
2 X 2 1/2	24.38	10	11 3/4"	11 1/2"
3 X 2 1/2	27.56	10	14"	15"
4 X 2 1/2	31.80	5	16"	15"
6 X 2 1/2	37.10	5	18"	20 1/2"
8 X 2 1/2	41.34	5	20"	22 1/2"
10 X 2 1/2	53.00	5	23"	22 1/2"
12 X 2 1/2	63.60	5	26"	24 1/2"
14 X 2 1/2	76.85	5	27 1/2"	24 1/2"

LINE FLANGE COVERS

Max Pipe Cov. O.D.	Fitting Number	List Price W/ Insert	List Price W/O Insert	PCS/ CTN	A	B	C
1 1/16"	1	\$2.54	\$2.23	25	2 3/4"	2 3/4"	3/4"
1 7/8"	3	2.97	2.65	25	3 1/2"	3 1/4"	3/4"
2 3/8"	5	3.39	3.07	25	4 1/2"	4 1/2"	1"
2 7/8"	6-7	3.74	3.37	25	6"	7 1/2"	2 1/4"
3 1/2"	8-9	4.51	4.06	25	5 1/2"	7 3/4"	2"
4 1/2"	10-11	6.00	5.41	25	7 1/4"	8 1/2"	2"
5 9/16"	12-13	7.50	6.76	25	7 1/2"	10 3/8"	2 1/4"
6 5/8"	14-15	9.76	8.79	15	8"	12"	2 3/4"
8 5/8"	16-17-18	13.18	11.87	15	8"	14 3/4"	3"
10 3/4"	19-20	18.00	16.21	15	9 1/2"	15 1/2"	3"
12 3/4"	21-22	22.50	20.26	15	9 1/2"	19 3/4"	3 1/4"
15"	23-24	28.50	25.66	10	11 1/2"	22 1/2"	3 1/2"
17"	25-26	37.51	33.77	10	11 1/2"	25"	4"
19"	27-28	44.52	40.28	5	14"	28 3/4"	4 7/8"
21"	29-30	53.00	47.70	5	15"	31"	5"
23"	31-32	60.42	55.12	5	15 1/4"	33 1/2"	5"
25"	33-34	68.90	62.01	5	15 1/2"	35 1/2"	5 1/4"
27"	35-36	77.38	69.64	5	17"	37 1/2"	5 3/4"
29"	37-38	85.86	77.38	5	18"	39 1/2"	6"

- To determine proper fitting size, see sizing chart on page 2.
- Line Flange Covers numbered 1, 3, and 5 are also referred to as "unions."
- 3/4" Line Flange Covers are also known as "unions."
- Line Flange Covers covers can be used for Victaulic® and normal butterfly valves also.

- Add 10% to list prices for less than full PCS/CTN for handling and set-up charge.
- Heavy duty is recommended for outdoors. Contact factory for pricing.
- For insulation of 2" or more, please order additional inserts as needed.

Ball Plug Valve Covers & Soil Pipe Hub Covers

List Prices

BALL PLUG VALVE COVERS PVC Only / No Inserts

Fitting Size Pipe x Insul. Thickness	List Price	PCS/ CTN
1/2 X 1	\$22.26	20
3/4 X 1	23.74	20
1 X 1	25.23	20
1 1/2 X 1	27.45	15
2 X 1	28.20	15
2 X 1 1/2	USE 3 X 1	
3 X 1	29.68	15
4 X 1	35.62	10
6 X 1	41.55	10
3/4 X 1 1/2	25.23	20
1 X 1 1/2	25.97	20
1 1/2 X 1 1/2	28.94	15
2 X 1 1/2	29.68	15
3 X 1 1/2	32.65	10
4 X 1 1/2	37.10	10
6 X 1 1/2	43.04	5
8 X 1 1/2	50.46	5
10 X 1 1/2	56.39	5
12 X 1 1/2	74.20	5
14 X 1 1/2	89.61	5
1 1/2 X 2	29.68	15
3 X 2	35.66	10
6 X 2	50.46	5

*Ball Plug Valve Covers are 50% longer than
Extra-Long Line Flange Covers.*

SOIL PIPE HUB COVERS

Fitting Number	List Price W/ Inserts	List Price W/O Inserts	PCS/ CTN
10	\$4.74	\$4.24	25
11	4.99	4.49	25
13	6.47	5.82	25
15	7.88	7.09	25
17	9.86	8.87	25
18-19	10.70	9.54	15
20-21	15.74	14.17	15
22	18.61	16.76	15
23-24	21.44	19.30	15
26-28	28.62	25.76	15

*To determine proper fitting size, see sizing chart
on Page 2.*



*Ball Plug Valve Cover
(BPV)*



*Soil Pipe Hub Cover
(SPH)*

- Add 10% to list prices for less than full PCS/CTN for handling and set-up charge.
- Heavy duty is recommended for outdoors. Contact factory for pricing.
- For insulation of 2" or more, please order additional inserts as needed.

Roof Drain Sump Covers, Cast Iron Y-45 Covers, Strainer Lateral "Y" Covers

List Prices



Roof Drain Sump Cover (RDS)



Cast Iron Y Cover (CIY)

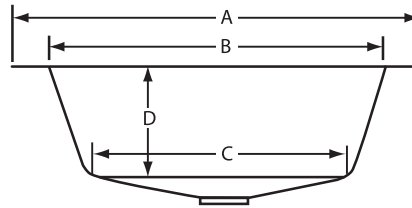


Strainer Lateral Y Cover (SLY)

ROOF DRAIN SUMP COVERS

Fitting Number	A	B	C	D	List Price W/ Inserts	List Price W/O Inserts
# I RDS	19"	16"	12 3/4"	5"	\$14.84	\$13.99
# II RDS	17"	12"	8 3/4"	5"	12.72	12.08
# III RDS	19"	15"	11"	3"	13.78	13.04
# IV RDS	14"	11"	8"	2 1/2"	13.78	13.04
# V RDS	5 1/2"	3 5/8"	3 1/2"	2"	4.48	3.75

Roof Drain Sump Cover Sizing Diagram



CAST IRON SINGLE OR DOUBLE 45°-Y COVERS PVC Only / No Inserts

Fitting Size	Pipe Sizes X Insul.	List Prices	Recommended Pipe Insul.
2" CIY	2" X 2" X 2" THK	\$8.48	3" X 1" X 20" LONG
3" CIY	3" X 3" X 2" THK	12.72	4" X 1" X 25" LONG
4" CIY	4" X 4" X 2" THK	19.08	6" X 1" X 30" LONG
6" CIY	6" X 6" X 2" THK	27.56	8" X 1" X 34" LONG
8" CIY	8" X 8" X 2" THK	31.80	10" X 1" X 43" LONG

STRAINER LATERAL 45°-Y COVERS

Fitting Number	List Price W/ Insert	List Price W/O Insert	PCS/ CTN	NO. of PCS
# 7-SLY	\$2.54	\$2.28	25	1
# 9-SLY	3.34	3.13	25	1
# 10-SLY	3.98	3.66	25	1
# 11-SLY	4.88	4.51	25	1
# 12-SLY	5.88	5.41	25	1
# 13-SLY	9.43	8.48	25	1
# 15-SLY	13.89	12.72	15	1
# 17-SLY	22.63	21.20	15	1
# 18-SLY	27.51	25.81	10	1
# 19-SLY	32.44	30.32	10	1
# 20-SLY	37.31	34.34	5	1
# 21-SLY	42.77	39.01	5	1
# 23-SLY	62.30	55.43	5	2
# 25-SLY	70.49	61.76	5	2

To determine proper fitting size, see sizing chart on Page 2.

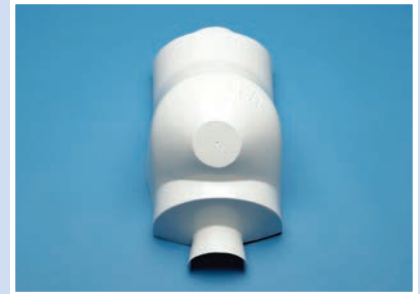
- Add 10% to list prices for less than full PCS/CTN for handling and set-up charge. Where no PCS/CTN is indicated, there is no extra charge.
- Heavy duty is recommended for outdoors. Contact factory for pricing.
- For insulation of 2" or more, please order additional inserts as needed.

Strainer Covers & P-Trap Covers

List Prices

STRAINER COVERS PVC Only / No Inserts

Fitting Sizes: Screwed Sizes	O.D.	Length	Diag.	List Price
STS-1/2" up to 1 1/2" thk.	4 1/8"	7 3/8"	4 5/8"	\$3.71
STS-1" up to 1 1/2" thk.	4 3/4"	8 1/2"	5 1/4"	4.51
STS-1 1/2" up to 1 1/2" thk.	5 5/8"	9 1/4"	6"	7.16
STS-2" up to 2" thk.	6 3/4"	10 5/8"	7 3/4"	11.02
STS-2 1/2" up to 3" up to 2" thk.	7 3/4"	13 3/4"	9 1/2"	18.02
Fitting Sizes: Flanged Sizes	O.D.	Length	Diag.	List Price
STF-2 1/2" Flgd. up to 2" thk.	9 3/4"	16"	8 3/4"	\$25.44
STF-3" Flgd. up to 2" thk.	11 3/4"	19 1/4"	10 5/8"	31.80
STF-4" Flgd. up to 2" thk.	13"	22"	12"	35.51
STF-5" Flgd. up to 2" thk.	14 1/4"	24 3/4"	15 1/2"	40.28
STF-6" Flgd. up to 2" thk.	15 1/4"	27 1/2"	17"	44.52
STF-8" Flgd. up to 2" thk.	17"	32"	18 1/2"	51.41
STF-10" Flgd. up to 2" thk.	20"	42"	25"	61.76

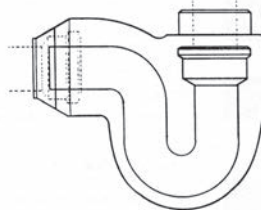


Strainer Cover

DEEP-SEAL P-TRAP COVERS PVC Only / No Inserts

Fitting Size	List Prices	PCS/CTN
2" X 1"	\$16.96	5
3" X 1"	20.41	5
4" X 1"	22.50	5
4" X 2" (Red. Ends)	24.80	5

Deep-Seal P-Trap



The bowl on a Deep-Seal P-Trap is 1.5 inches lower than a Standard P-Trap.



Deep-Seal P-Trap Cover

STANDARD P-TRAP COVERS PVC Only / No Inserts

Fitting Size	List Prices	PCS/CTN
1 1/2", 1 1/4" X 1/2"	\$5.30	5
1 1/2" X 1"	7.40	5
1 1/2" X 1 1/2"	9.45	5
2" X 1"	14.84	5
3" X 1"	18.74	5
3" X 2" (Red. Ends)	23.20	5
4" X 1"	22.50	5
4" X 2" (Red. Ends)	24.80	5
5" x 1/2" to 2"	26.95	5
6" x 1" to 2"	30.00	5

HANDICAP P-TRAP COVERS PVC Only / No Inserts

Fitting Size	List Price	PCS/CTN
1 1/4", 1 1/2" x 1"	\$15.37	5
HVG (Handicap Valve Guard)	4.24	10



Standard P-Trap Cover



Handicap P-Trap Cover

- Add 10% to list prices for less than full PCS/CTN for handling and set-up charge.
- Heavy duty is recommended for outdoors. Contact factory for pricing.

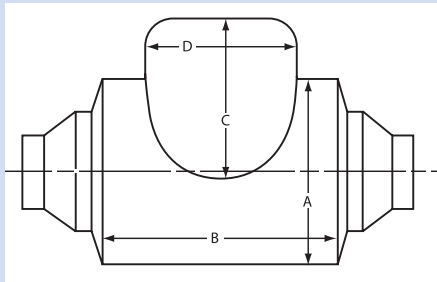
Flanged Gate Valve Covers & PVC Accessories

List Prices



Flanged Gate Valve (FGV)

Flanged Gate Valve Sizing Diagram



FLANGED GATE VALVE COVERS PVC Only / No Inserts

Metal Flange Circum.	O.D.	Valve Size X Insulation Thickness	A O.D.	Recommended Pipe Insulation	B	C	D	List Price
19"	6"	2" X 1 1/2", 1", 1/2"	8 5/8"	6" CPS X 1"	X 11 1/2"	8 1/4"	7 1/4"	\$20.62
22"	7"	2 1/2" X 1 1/2", 1", 1/2"	9 5/8"	6" IPS X 2"	X 13 1/2"	7 1/2"	8 1/2"	23.43
23 1/2"	7 1/2"	3" X 1", 1/2"	9 5/8"	7" IPS X 1"	X 13 1/2"	7 1/2"	8 1/2"	23.43
23 1/2"	7 1/2"	3" X 2", 1 1/2", 1/2"	10 3/4"	7" IPS X 1 1/2"	X 15"	6 3/4"	9 1/2"	26.71
28 1/4"	9"	4" X 1", 1/2"	10 3/4"	8" IPS X 1"	X 15"	9"	9 1/2"	27.40
28 1/4"	9"	4" X 2", 1 1/2", 1/2"	12 3/4"	8" IPS X 2"	X 16"	9"	10 3/8"	28.30
31 1/2"	10"	5" X 1 1/2", 1", 1/2"	12 3/4"	9" IPS X 1 1/2"	X 16"	10"	10 3/8"	29.20
31 1/2"	10"	5" X 2", 1 1/2", 1"	14"	9" IPS X 2"	X 14"	10 3/4"	11 3/4"	31.64
34 1/2"	11"	6" X 1", 1/2"	12 3/4"	10" IPS X 1"	X 16"	11 1/2"	10 3/8"	35.35
34 1/2"	11"	6" X 1 1/2", 1", 1/2"	14"	10" IPS X 1 1/2"	X 17"	12 1/4"	11 3/4"	37.52
34 1/2"	11"	6" X 2", 1 1/2", 1"	15"	10" IPS X 2"	X 18"	12 1/4"	12 1/4"	41.45
42 1/4"	13 1/2"	8" X 2", 1 1/2", 1", 1/2"	18"	12" IPS X 2 1/2"	X 19 1/4"	16"	13 1/2"	50.93
42 1/4"	13 1/2"	8" X 3"	20"	12" IPS X 3 1/2"	X 20 1/2"	17"	13 1/2"	57.66
50 1/4"	16"	10" X 2", 1 1/2", 1"	20"	16" IPS X 2"	X 20 1/2"	17"	13 1/2"	57.66
60"	19"	12" X 2", 1 1/2", 1"	23"	19" IPS X 2"	X 22"	21"	16"	70.01

PVC ACCESSORIES

White Stainless Steel Tacks

Type	Number Per Box	List Price Per Box
White Tacks	500	\$21.57

White Vinyl Tape

Size	Rolls Per Carton	List Price Per Roll
1" x 100'	48	\$8.11
1 1/2" x 100'	32	11.71
2" x 100'	24	16.43

PVC Liquid Adhesive

Type	Quart - 14/CTN	Gallon - 6/CTN
White	\$25.85	\$69.56
Clear	25.85	69.56

ProtoOne Specialty Adhesive - 12/CTN

Color	Net Price
White, Exod Gray or Clear	\$9.95 per tube (No discount applies)

Celulon Caulk

White or Clear Water-Based Caulk Adhesive

List Price	\$5.30 per tube
Coverage	50 Lin F. (3/16" Bead)

Miscellaneous Accessories

Tack Hole Punch	\$22.00
Adhesive Gun	26.50
Brush Tip	6.50

• Heavy duty is recommended for outdoors. Contact factory for pricing.

Tank Panels

List Prices

TANK PANELS		
Indoor/Outdoor LoSMOKE® White PVC		
Panel Thickness	List Price Per Panel	Weight Per Panel (lbs.)
*.030"	\$96.80	6
*.040"	102.10	8
** .050"	110.58	10
** .060"	118.00	12
** .070"	126.00	14

\$40.00 Net Skid Charge – Each.
(Approximately 75 panels per skid.)

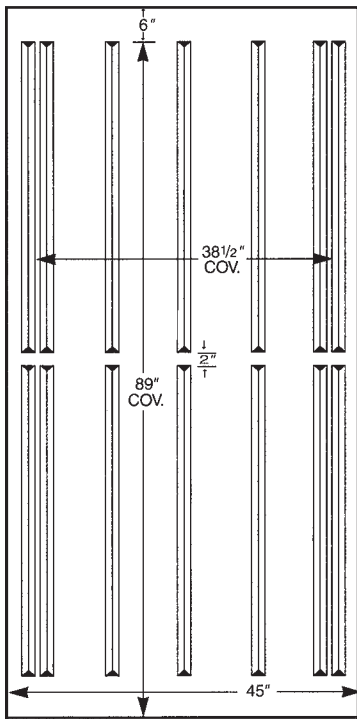
* Indoor Recommended
** Outdoor Recommended

CORRUGATED TANK PANELS		
Indoor/Outdoor LoSMOKE® White PVC		
Panel Thickness	List Price Per Panel	Weight Per Panel (lbs.)
*.040"	\$115.75	9
** .050"	124.58	11 1/4
** .060"	132.00	13 1/2
** .070"	140.00	15 3/4

\$40.00 Net Skid Charge – Each.
(Approximately 75 panels per skid.)

* Indoor Recommended
** Outdoor Recommended

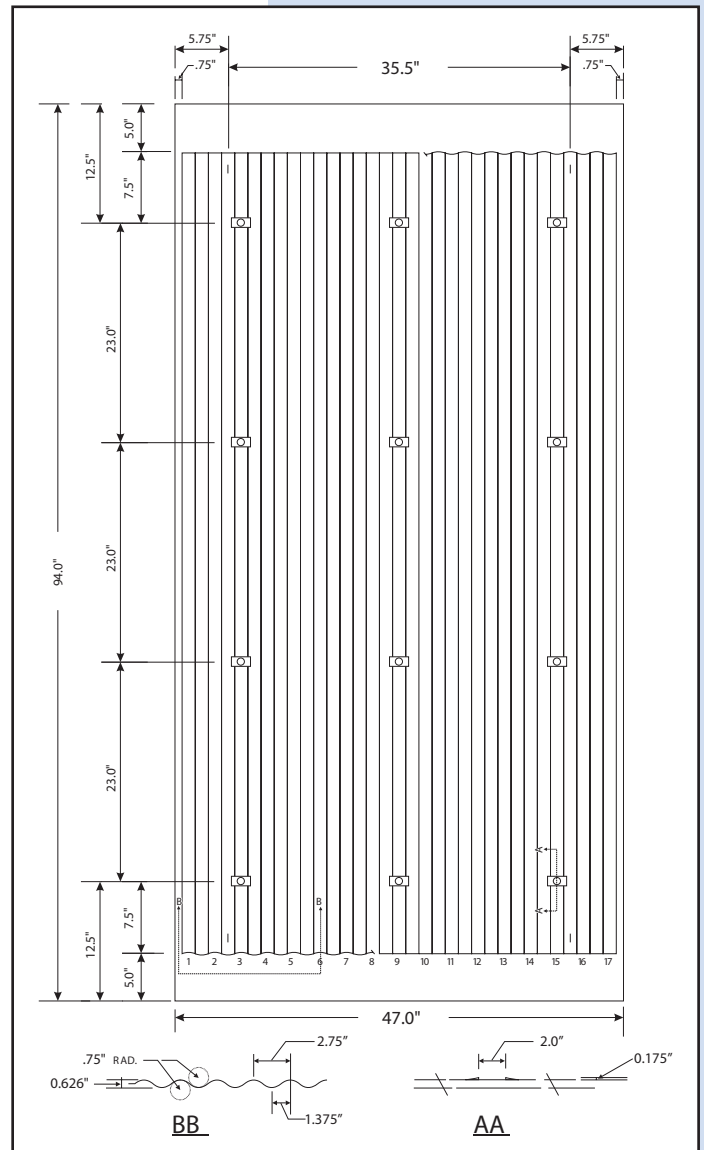
Tank Panel
Dimensions Diagram



Additional Screws
#6 x 1/2" White HEX Head Screws
410 Stainless Steel Drill Screws
List Price: \$21.20 Per 100 Screws

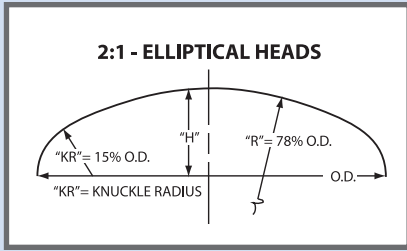
• Please note: Proto will provide 10 Drill Screws with each Tank Panel purchased.
 Proto will also include one tube of caulk adhesive with every seven panels purchased.

Corrugated Tank Panel Dimensions Diagram

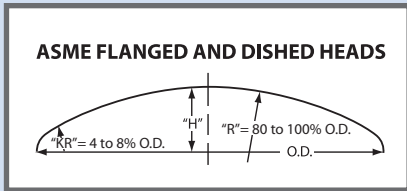


Protop® Tank Head Covers

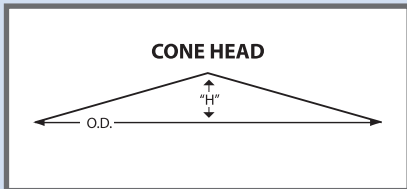
Sizing Chart



2:1 – Elliptical Heads (EL)



ASME Flanged and Dished Heads (F&D)



Cone Head (CONE HEAD)

Ordering Example:

EL # 3-4

F&D # 3-4

CONE # 3-4

PROTOP® TANK HEAD COVERS						
Tank O.D. Inches=Feet	Insulation Thickness					
	1"	1.5"	2"	2.5"	3"	3.5"
24"=2'	# 1-4	# 1-4	# 1-4	# 1-4	# 1-4	# 1-4
30"=2.5'	# 2-4	# 2-4	# 2-4	# 2-4	# 2-4	# 2-4
36"=3'	# 3-4	# 3-4	# 3-4	# 3-4	# 3-4	# 3-4
42"=3.5'	# 3-5	# 3-5	# 3-5	# 3-5	# 3-5	# 3-5
48"=4'	# 4-4	# 4-4	# 4-4	# 4-4	# 4-4	# 4-4
54"=4.5'	# 5-7	# 5-7	# 5-7	# 5-7	# 5-7	# 5-7
60"=5'	# 5-7	# 5-8	# 5-8	# 5-8	# 5-8	# 5-8
66"=5.5'	# 5-8	# 5-8	# 5-8	# 6-8	# 6-9	# 6-9
72"=6'	# 6-9	# 6-9	# 6-9	# 6-9	# 6-9	# 6-9
78"=6.5'	# 6-9	# 6-10	# 6-10	# 7-10	# 7-10	# 7-10
84"=7'	# 7-11	# 7-11	# 7-11	# 7-11	# 7-11	# 7-11
90"=7.5'	# 7-11	# 7-11	# 7-11	# 8-11	# 8-11	# 8-11
96"=8'	# 8-11	# 8-12	# 8-12	# 8-12	# 8-12	# 8-12
102"=8.5'	# 8-12	# 8-12	# 8-12	# 9-13	# 9-13	# 9-13
108"=9'	# 9-13	# 9-13	# 9-13	# 9-13	# 9-13	# 9-13
114"=9.5'	# 9-14	# 9-14	# 9-14	# 10-14	# 10-14	# 10-14
120"=10'	# 10-14	# 10-14	# 10-14	# 10-15	# 10-15	# 10-15
126"=10.5'	# 10-15	# 10-15	# 10-15	# 11-15	# 11-15	# 11-16
132"=11'	# 11-16	# 11-16	# 11-16	# 11-16	# 11-16	# 11-16
138"=11.5'	# 11-16	# 11-16	# 11-16	# 12-17	# 12-17	# 12-17
144"=12'	# 12-17	# 12-17	# 12-17	# 12-17	# 12-17	# 12-18
150"=12.5'	# 12-18	# 12-18	# 12-18	# 13-18	# 13-18	# 13-18
156"=13'	# 13-18	# 13-18	# 13-18	# 13-19	# 13-19	# 13-19
162"=13.5'	# 13-19	# 13-19	# 13-19	# 14-19	# 14-19	# 14-20
168"=14'	# 14-20	# 14-20	# 14-20	# 14-20	# 14-20	# 14-20
174"=14.5'	# 14-20	# 14-20	# 14-20	# 15-21	# 15-21	# 15-21
180"=15'	# 15-21	# 15-21	# 15-21	# 15-21	# 15-21	# 15-22
186"=15.5'	# 15-22	# 15-22	# 15-22	# 16-22	# 16-22	# 16-22
192"=16'	# 16-22	# 16-22	# 16-22	# 16-23	# 16-23	# 16-23
198"=16.5'	# 16-23	# 16-23	# 16-23	# 17-23	# 17-23	# 17-23
204"=17'	# 17-24	# 17-24	# 17-24	# 17-24	# 17-24	# 17-24
210"=17.5'	# 17-24	# 17-25	# 17-25	# 18-25	# 18-25	# 18-25
216"=18'	# 18-25	# 18-25	# 18-25	# 18-25	# 18-25	# 18-26
288"=24'	# 24-42	# 24-42	# 24-42	# 24-42	# 24-42	# 24-42

For insulation greater than 3.5" please contact factory for availability and lead time.

Protop® Tank Head Covers (cont.)

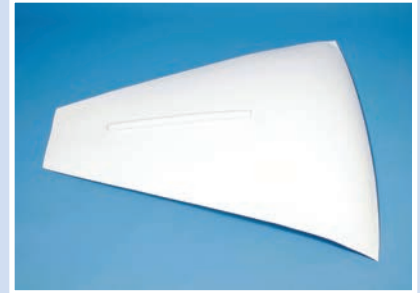
List Prices

PROTOP® TANK HEAD COVERS		
Protop® Sizes & Sections Per Head	List Price Per Section	List Price Per Head (For the # of Sections Suggested)
# 2-4	\$31.80	\$127.20
# 3-4	35.93	143.72
# 4-4	35.93	143.72
# 5-7	35.93	251.51
# 5-8	35.93	287.44
# 6-8	39.11	312.88
# 6-9	39.11	351.99
# 6-10	39.11	391.10
# 7-10	39.11	391.10
# 7-11	39.11	430.21
# 7-12	39.11	469.32
# 8-11	42.29	465.19
# 8-12	42.29	507.48
# 8-13	42.29	549.77
# 9-13	42.29	549.77
# 9-14	42.29	592.06
# 10-14	44.41	621.74
# 10-15	44.41	666.15
# 11-16	44.41	710.56
# 12-17	47.59	809.03
# 12-18	47.59	856.62
# 13-18	51.83	932.94
# 13-19	51.83	984.77
# 14-19	56.07	1,065.33
# 14-20	56.07	1,121.40
# 15-20	58.19	1,163.80
# 15-22	58.19	1,280.18
# 16-22	61.37	1,350.14
# 16-23	61.37	1,411.51
# 17-23	64.55	1,484.65
# 17-24	64.55	1,549.20
# 17-25	64.55	1,613.75
# 18-25	64.55	1,613.75
# 18-26	64.55	1,678.30
# 24-42	127.50	5,355.00

Panel kit includes screws, caulk and masking tape.

Additional Screws

#6 x ½" White HEX Head Screws
410 Stainless Steel Drill Screws
List Price: \$21.20 Per 100 Screws



Protop® Tank Head

Ordering Example:

EL # 3-4
F&D # 3-4
CONE # 3-4

Bare Iron Pipe Fitting Covers

List Prices



Bare Iron Pipe Screwed Short Radius 90° Elbow Cover



Bare Iron Pipe Screwed Short Radius 45° Elbow Cover



Bare Iron Pipe Screwed Tee Cover

BARE IRON PIPE SHORT RADIUS SCREWED 90° ELBOW COVERS

Reducer fittings can be used	
Size	List Price
1/2" IP SR90**	\$3.39
3/4" IP SR90**	3.39
1" IP SR90**	3.39
1 1/4" IP SR90**	3.39
1 1/2" IP SR90	* #7 Reducer 90
2" IP SR90	* #9 Reducer 90
2 1/2" IP SR90	* #10 Reducer 90
3" IP SR90	* #12 Reducer 90
3 1/2" IP SR90	* #15 Reducer 90
4" IP SR90	* #15 Reducer 90

*See the Reducer 90° chart on page 9 for pricing.

BARE IRON PIPE SHORT RADIUS SCREWED 45° ELBOW COVERS

Reducer fittings can be used	
Size	List Price
1/2" IP 45**	\$3.55
3/4" IP 45**	3.55
1" IP 45**	3.55
1 1/4" IP 45**	3.55
1 1/2" IP 45	*#7 Reducer 45
2" IP 45	*#9 Reducer 45
2 1/2" IP 45	*#10 Reducer 45
3" IP 45	*#12 Reducer 45
3 1/2" IP 45	*#15 Reducer 45
4" IP 45	*#15 Reducer 45

*See the Reducer 45° chart on page 9 for pricing.

BARE IRON PIPE SCREWED TEE COVERS

Reducer fittings can be used	
Size	List Price
1/2" IP Tee**	\$3.55
3/4" IP Tee**	3.55
1" IP Tee**	3.55
1 1/4" IP Tee**	3.55
1 1/2" IP Tee	* #7 Reducer Tee
2" IP Tee	* #9 Reducer Tee
2 1/2" IP Tee	* #10 Reducer Tee
3" IP Tee	* #12 Reducer Tee
3 1/2" IP Tee	* #15 Reducer Tee
4" IP Tee	* #15 Reducer Tee

*See the Reducer Tee chart on page 9 for pricing.

MECHANICAL GROOVED BARE IRON PIPE COUPLING COVERS

Iron Pipe Size	List Price
1/2" IPS BP G-CPLG**	\$3.23
3/4" IPS BP G-CPLG**	3.23
1" IPS BP G-CPLG**	3.23
1 1/4" IPS BP G-CPLG**	3.23
1 1/2" IPS BP G-CPLG	3.23
2" IPS BP G-CPLG	3.55
2 1/2" IPS BP G-CPLG	3.76
3" IPS BP CAN USE # 8-9 G-CPLG*	4.08
3 1/2" IPS BP CAN USE # 10-11-12 G-CPLG*	4.45
4" IPS BP CAN USE # 10-11-12 G-CPLG*	5.09
5" IPS BP CAN USE # 13 G-CPLG*	6.31
6" IPS BP CAN USE # 14-15 G-CPLG*	7.69
8" IPS BP CAN USE # 18 G-CPLG*	10.39
10" IPS BP CAN USE # 19-20 G-CPLG*	13.25
12" IPS BP CAN USE # 21-22 G-CPLG*	16.75
14" IPS BP CAN USE # 23-24 G-CPLG*	20.99
16" IPS BP CAN USE # 25-26 G-CPLG*	28.09
18" IPS BP CAN USE # 27-30 G-CPLG*	35.46
20" IPS BP CAN USE # 27-30 G-CPLG*	35.46
24" IPS BP CAN USE # 31-33 G-CPLG*	41.87

*See the Mech. Grooved Coupling chart on page 12 for pricing.

BARE IRON PIPE LONG RADIUS SCREWED 90° ELBOW COVERS

Size	List Price
1 1/2" IP LR 90	\$4.35
2" IP LR 90	5.15
3" IP LR 90	6.15
4" IP LR 90	10.35
6" IP LR 90	21.00
8" IP LR 90	30.75
10" IP LR 90	39.75
12" IP LR 90	56.25
14" IP LR 90	71.50
16" IP LR 90	87.50
18" IP LR 90	98.00

**Also Fits Schedule 40 Pipe.

Bare Copper Pipe Fitting Covers

List Prices

BARE COPPER PIPE SHORT RADIUS 90° ELBOW COVERS

Standard fittings can be used

Size	Price
1/2" CP SR90	\$3.39
3/4" CP SR90	3.39
1" CP SR90	3.39
1 1/4" CP SR90	3.39
1 1/2" CP SR90	* #2 SR 90
2" CP SR90	* #4 SR 90
2 1/2" CP SR90	* #6 SR 90
3" CP SR90	* #8 SR 90
3 1/2" CP SR90	* #9 SR 90
4" CP SR90	* #10 SR 90

*See the Short Radius 90° chart on page 3 for pricing.

BARE COPPER PIPE 45° ELBOW COVERS

Standard fittings can be used

Size	Price
1/2" CP SR45	\$3.55
3/4" CP SR45	3.55
1" CP SR45	3.55
1 1/4" CP SR45	3.55
1 1/2" CP SR45	#2 SR45
2" CP SR45	#4 SR45
2 1/2" CP SR45	#6 SR45
3" CP SR45	#8 SR45
3 1/2" CP SR45	#9 SR45
4" CP SR45	#10 SR45

*See the Short Radius 45° chart on page 3 for pricing.

BARE COPPER PIPE TEE COVERS

Standard fittings can be used

Size	Price
1/2" CP Tee	\$3.55
3/4" CP Tee	3.55
1" CP Tee	3.55
1 1/4" CP Tee	3.55
1 1/2" CP Tee	* #2 Tee
2" CP Tee	* #4 Tee
2 1/2" CP Tee	* #6 Tee
3" CP Tee	* #8 Tee
3 1/2" CP Tee	* #9 Tee
4" CP Tee	* #10 Tee

*See the Tee/Valve chart on page 4 for pricing.

MECHANICAL GROOVED BARE COPPER PIPE COUPLING COVERS

Copper Pipe Size	Pipe Ends O.D.	List Price
3/4" CPS	5/8" CPS	\$3.23
1" CPS	1 1/8" CPS	3.23
1 1/4" CPS	1 3/8" CPS	3.23
1 1/2" CPS	1 5/8" CPS	3.23
2" CPS	2 1/8" CPS	3.23
2 1/2" CPS	2 5/8" CPS	3.55
3" CPS	3 1/8" CPS	3.76
3 1/2" CPS	3 5/8" CPS USE #8-9 G-CPLG	4.08
4" CPS	4 1/8" CPS USE #10-11-12 G-CPLG	4.45
5" CPS	5 1/8" CPS USE #10-11-12 G-CPLG	5.09
6" CPS	6 1/8" CPS USE #13 G-CPLG	6.31

*See the Mech. Grooved Coupling chart on page 12 for pricing.



Copper Bare Pipe 90° Elbow Cover



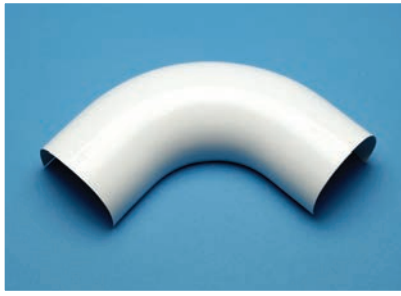
Copper Bare Pipe 45° Elbow Cover



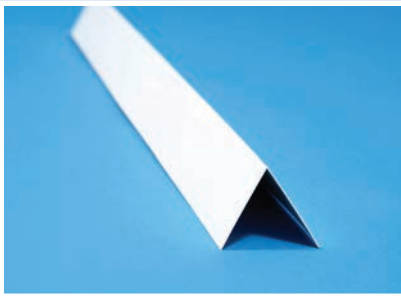
Copper Bare Pipe Tee Cover

Bare Metal Covers, 90° Right Angle Covers, I-Beam Covers, 90° Sweep Covers

List Prices



Sweep 90° Elbow Cover




90° Right Angle Cover

BARE METAL PVC COVERS - 6' LENGTHS

Fitting Size	I-Beams List Price	Channels
		List price SGL Channel X 2 For DBL Channel
1"	N/A	N/A
1 1/2"	N/A	N/A
2"	N/A	N/A
3"	\$45.78	\$42.30
4"	48.96	44.82
5"	52.80	45.78
6"	54.36	48.96
7"	56.58	51.54
8"	59.16	52.80
9"	63.60	55.02
10"	68.04	62.04
12"	80.76	67.74
14"	89.34	81.42
15"	92.22	N/A
16"	98.58	N/A
18"	106.56	N/A
20"	119.58	N/A
21"	138.36	N/A
24"	145.98	N/A
27"	162.48	N/A
30"	219.12	N/A

If desired size is not shown, please contact factory for availability.

90° RIGHT ANGLE COVERS

7' 4" Bent Lengths		
	.020" Thick Each	.030" Thick Each
	List Price	List Price
1 1/2" X 1 1/2"	3.40	4.78
2" X 2"	4.48	6.32
2 1/2" X 2 1/2"	5.67	7.95
3" X 3"	6.84	9.57
4" X 4"	9.06	12.69
5" X 5"	11.34	15.88
6" X 6"	12.99	18.18
8" X 8"	18.18	25.42
10" X 10"	22.68	31.75
12" X 12"	27.24	38.14

90° & 45° SWEEP COVERS

Outside Diameter	Center Line	List Price
90° Sweep Covers		
1 3/8"	7 1/2" CL	\$5.25
1 5/8"	3 3/4" CL	2.25
3"	4" CL	2.50
3 1/8"	4 1/8" CL	2.75
3 7/8"	4 1/16" CL	3.35
1 7/8"	6" CL	3.58
3 5/8"	4 7/8" CL	3.75
2 1/4"	8" CL	5.50
2 3/8"	9 1/2" CL	6.00
3 3/8"	9 1/2" CL	6.50
5"	6 1/4" CL	6.90
5 1/8"	12" CL	12.00
3 1/2"	13" CL	12.75
3 5/8"	18" CL	17.75
4 5/8"	18" CL	20.91
5 5/8"	18" CL	27.88
5 5/8"	20" CL	29.88
5 5/8"	24" CL	33.88
10 3/4"	15" CL	50.97
45° Sweep Covers		
1 3/8"	7 1/2" CL	\$5.00
1 5/8"	3 3/4" CL	2.25
4 5/8"	18" CL	12.45
5 5/8"	18" CL	15.94
5 5/8"	24" CL	20.94

I-Beam Covers:

Specify
Beam Shape
All Dimensions
Lineal Feet Required

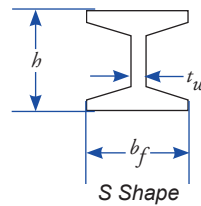
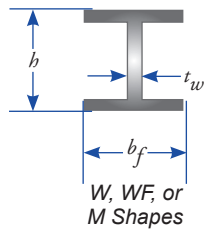
Beam Dimensions

b_f = Width of Flange

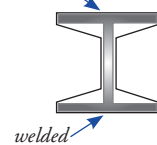
h = Height of Section

t_f = Average Thickness of Flange

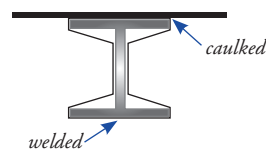
t_w = Thickness of Web



I-Beam Cover Installed as Furnished



I-Beam Cover Field Cut and Installed on Beam Supporting Ceiling



PVC Jacketing & Cut & Curl

LoSMOKE® PVC



LoSMOKE® PVC

Indoor/Outdoor grade jacketing featuring a high gloss finish and a 25/50 rating per ASTM E-84 method up to .035" mil. thick
Available in standard and bulk rolls

PVC JACKETING
AND CUT & CURL

PVC Jacketing

List Prices

PVC JACKETING

LoSMOKE® STANDARD ROLLS

35 1/2" WIDE – 45 LBS./ROLL						48" WIDE – 60 LBS./ROLL					
THICK (in.)	ROLL FOOTAGE (lin. ft.)	ROLL AREA (sq. ft.)	WEIGHT PER (sq. ft.)	LIST PER (roll)	LIST PER (sq. ft.)	THICK (in.)	ROLL FOOTAGE (lin. ft.)	ROLL AREA (sq. ft.)	WEIGHT PER (sq. ft.)	LIST PER (roll)	LIST PER (sq. ft.)
0.010	201.67	597	0.075	\$137.80	\$0.24	0.010	N/A	N/A	N/A	N/A	N/A
0.015	134.44	398	0.112	137.80	0.35	0.015	134.44	538	0.112	186.27	0.35
0.020	100.83	298	0.150	137.80	0.47	0.020	100.83	403	0.150	186.27	0.47
0.030	67.22	199	0.225	137.80	0.70	0.030	67.22	269	0.225	186.27	0.70
0.040	50.00	148	0.299	137.80	0.93	0.040	50.00	200	0.299	186.27	0.93

LoSMOKE® BULK ROLLS

35 1/2" WIDE – 313 LBS./ROLL						48" WIDE – 423 LBS./ROLL					
THICK (in.)	ROLL FOOTAGE (lin. ft.)	ROLL AREA (sq. ft.)	WEIGHT PER (sq. ft.)	LIST PER (roll)	LIST PER (sq. ft.)	THICK (in.)	ROLL FOOTAGE (lin. ft.)	ROLL AREA (sq. ft.)	WEIGHT PER (sq. ft.)	LIST PER (roll)	LIST PER (sq. ft.)
0.010	1412.70	4179	0.075	\$826.80	\$0.20	0.010	N/A	N/A	N/A	N/A	N/A
0.015	941.80	2786	0.112	826.80	0.30	0.015	941.80	3767	0.112	1118.04	0.30
0.020	706.35	2090	0.150	826.80	0.40	0.020	706.35	2825	0.150	1118.04	0.40
0.030	470.90	1393	0.225	826.80	0.60	0.030	470.90	1884	0.225	1118.04	0.60
0.040	353.18	1045	0.299	826.80	0.80	0.040	353.18	1412	0.299	1118.04	0.80

• Order 10 or more bulk rolls in any combination – save 5%.

LoSmoke® 35.5" & 48" Wide Cut & Curl with Self-Sealing Lap

List Prices

When ordering, please specify with or without self-sealing lap.

LoSmoke® 35.5" & 48" WIDE CUT & CURL WITH SELF-SEALING LAP								
Circumference Including 2" to 3" Longside Overlap	Covers O.D. Inches	Fitting Number	0.020 Per Section 35 1/2" Wide List Price	0.030 Per Section 35 1/2" Wide List Price	0.040 Per Section 35 1/2" Wide List Price	0.020 Per Section 48" Wide List Price	0.030 Per Section 48" Wide List Price	0.040 Per Section 48" Wide List Price
7"	1 5/8"	#2	3.31	N/A	N/A	4.51	N/A	N/A
7 7/8"	1 7/8"	#3	3.44	N/A	N/A	4.67	N/A	N/A
8 5/8"	2 1/8"	#4	3.58	N/A	N/A	4.87	N/A	N/A
9 1/2"	2 3/8"	#5	3.70	5.37	N/A	5.03	7.32	N/A
10 1/4"	2 5/8"	#6	3.82	5.57	N/A	5.20	7.59	N/A
11"	2 7/8"	#7	3.94	5.37	N/A	5.36	7.32	N/A
12"	3 1/8"	#8	4.15	5.66	N/A	5.64	7.72	N/A
13"	3 1/2"	#9	4.30	5.90	N/A	5.85	8.05	N/A
14 5/8"	4"	#10	4.50	6.19	N/A	6.13	8.45	N/A
16 1/8"	4 1/2"	#11	4.79	6.61	8.48	6.55	9.03	11.59
17 3/4"	5"	#12	5.04	6.97	8.95	6.86	9.52	12.24
19 1/2"	5 9/16"	#13	5.34	7.41	9.52	7.32	10.13	13.01
21 3/4"	6 1/8"	#14	5.63	7.86	10.12	7.68	10.73	13.83
23 3/8"	6 5/8"	#15	5.83	8.16	10.50	7.97	11.14	14.36
24 7/8"	7 1/8"	#16	6.08	8.50	11.01	8.29	11.63	15.05
26 1/2"	7 5/8"	#17	6.31	8.87	11.45	8.61	12.12	15.66
29 1/2"	8 5/8"	#18	6.61	9.23	11.92	9.02	12.61	16.31
32 3/4"	9 5/8"	#19	7.26	10.26	13.32	9.92	14.04	18.23
36 1/4"	10 3/4"	#20	8.04	11.42	14.83	10.98	15.62	20.29
39 1/2"	11 3/4"	#21	8.54	12.15	15.78	11.67	16.53	21.60
42 1/2"	12 3/4"	#22	9.28	13.25	17.29	12.73	18.14	23.67
46 1/2"	14"	#23	9.96	14.21	18.57	13.63	19.47	25.42
49 5/8"	15"	#24	10.68	15.31	20.00	14.60	20.95	27.38
52 3/4"	16"	#25	11.06	15.90	20.80	15.17	21.76	28.48
56 3/8"	17"	#26	12.07	17.44	22.75	16.51	23.88	31.17
59 1/2"	18"	#27	12.61	18.18	23.82	17.24	24.89	32.63
62 5/8"	19"	#28	13.23	19.10	25.07	18.10	26.16	34.34
66"	20"	#29	13.88	20.06	26.31	19.00	27.46	36.06
69"	21"	#30	14.65	21.21	27.86	20.05	29.05	38.17
72"	22"	#31	15.51	22.49	29.56	21.24	30.80	40.49
75 1/4"	23"	#32	16.11	23.34	30.71	22.05	31.99	42.08
78 3/8"	24"	#33	16.50	23.94	31.49	22.57	32.78	43.14
81 1/2"	25"	#34	16.88	24.51	32.23	23.10	33.56	44.15
84 5/8"	26"	#35	18.07	26.26	34.57	24.71	35.97	47.37
87 7/8"	27"	#36	18.66	27.14	35.73	25.55	37.19	48.96
91"	28"	#37	19.19	27.92	36.76	26.28	38.25	50.38
94"	29"	#38	19.82	28.84	38.04	27.14	39.52	52.13
97"	30"	#39	20.36	29.64	39.08	27.87	40.61	53.56

• Contact factory for .015 x 35 1/2" and .010 x 35 1/2" pricing.
 • .010 and .015 Cut and Curl are not available in 48" pieces.

LoSmoke® 35.5" & 48" Wide Cut & Curl without Self-Sealing Lap

List Prices

When ordering, please specify with or without self-sealing lap.

LoSmoke® 35.5" & 48" WIDE CUT & CURL WITHOUT SELF-SEALING LAP								
Circumference Including 2" to 3" Longside Overlap	Covers O.D. Inches	Fitting Number	0.020 Per Section 35 1/2" Wide List Price	0.030 Per Section 35 1/2" Wide List Price	0.040 Per Section 35 1/2" Wide List Price	0.020 Per Section 48" Wide List Price	0.030 Per Section 48" Wide List Price	0.040 Per Section 48" Wide List Price
7"	1 5/8"	#2	2.31	N/A	N/A	3.18	N/A	N/A
7 7/8"	1 7/8"	#3	2.44	N/A	N/A	3.34	N/A	N/A
8 5/8"	2 1/8"	#4	2.58	N/A	N/A	3.54	N/A	N/A
9 1/2"	2 3/8"	#5	2.70	4.37	N/A	3.70	5.99	N/A
10 1/4"	2 5/8"	#6	2.82	4.57	N/A	3.87	6.26	N/A
11"	2 7/8"	#7	2.94	4.37	N/A	4.03	5.99	N/A
12"	3 1/8"	#8	3.15	4.66	N/A	4.31	6.39	N/A
13"	3 1/2"	#9	3.30	4.90	N/A	4.52	6.72	N/A
14 5/8"	4"	#10	3.50	5.19	N/A	4.80	7.12	N/A
16 1/8"	4 1/2"	#11	3.79	5.61	7.48	5.22	7.70	10.26
17 3/4"	5"	#12	4.04	5.97	7.95	5.53	8.19	10.91
19 1/2"	5 9/16"	#13	4.34	6.41	8.52	5.99	8.80	11.68
21 3/4"	6 1/8"	#14	4.63	6.86	9.12	6.35	9.40	12.50
23 3/8"	6 5/8"	#15	4.83	7.16	9.50	6.64	9.81	13.03
24 7/8"	7 1/8"	#16	5.08	7.50	10.01	6.96	10.30	13.72
26 1/2"	7 5/8"	#17	5.31	7.87	10.45	7.28	10.79	14.33
29 1/2"	8 5/8"	#18	5.61	8.23	10.92	7.69	11.28	14.98
32 3/4"	9 5/8"	#19	6.26	9.26	12.32	8.59	12.71	16.90
36 1/4"	10 3/4"	#20	7.04	10.42	13.83	9.65	14.29	18.96
39 1/2"	11 3/4"	#21	7.54	11.15	14.78	10.34	15.20	20.27
42 1/2"	12 3/4"	#22	8.28	12.25	16.29	11.40	16.81	22.34
46 1/2"	14"	#23	8.96	13.21	17.57	12.30	18.14	24.09
49 5/8"	15"	#24	9.68	14.31	19.00	13.27	19.62	26.05
52 3/4"	16"	#25	10.06	14.90	19.80	13.84	20.43	27.15
56 3/8"	17"	#26	11.07	16.44	21.75	15.18	22.55	29.84
59 1/2"	18"	#27	11.61	17.18	22.82	15.91	23.56	31.30
62 5/8"	19"	#28	12.23	18.10	24.07	16.77	24.83	33.01
66"	20"	#29	12.88	19.06	25.31	17.67	26.13	34.73
69"	21"	#30	13.65	20.21	26.86	18.72	27.72	36.84
72"	22"	#31	14.51	21.49	28.56	19.91	29.47	39.16
75 1/4"	23"	#32	15.1 1	22.34	29.71	20.72	30.66	40.75
78 3/8"	24"	#33	15.50	22.94	30.49	21.24	31.45	41.81
81 1/2"	25"	#34	15.88	23.51	31.23	21.77	32.23	42.82
84 5/8"	26"	#35	17.07	25.26	33.57	23.38	34.64	46.04
87 7/8"	27"	#36	17.66	26.14	34.73	24.22	35.86	47.63
91"	28"	#37	18.19	26.92	35.76	24.95	36.92	49.05
94"	29"	#38	18.82	27.84	37.04	25.81	38.19	50.80
97"	30"	#39	19.36	28.64	38.08	26.54	39.28	52.23

• Contact factory for .015 x 35 1/2" and .010 x 35 1/2" pricing.
 • .010 and .015 Cut and Curl are not available in 48" pieces.

PVC Sheets & Corner Edge Rolls

List Prices

CORNER EDGE PVC ROLLS			
100' Rolls	Thick (in.)	LoSMOKE® PVC With Release Tape	LoSMOKE® Plain PVC
3" WIDE	.020	\$32.07	\$15.90
	.030	37.37	21.20
4" WIDE	.020	42.93	21.20
	.030	50.35	28.62



Corner Edge Roll

PVC SHEETS				
Thick (in.)	41 1/2" X 87 1/2"	4' X 4'	4' X 8'	4' X 10'
LoSMOKE® PVC Sheets				
.020	N/A	\$8.80	\$17.64	\$22.05
.025	\$13.78	11.04	22.08	27.56
.030	16.80	13.23	26.46	33.07
.035	19.50	15.44	30.87	38.59
.040	22.26	17.64	35.28	44.10
.050	27.77	21.88	43.76	54.70
.060	33.92	26.29	52.58	65.73

There is an additional \$40.00 net skid charge to ship PVC sheets.

Please call factory for lead time and availability.

Rod Covers & Cut and Curl for Bare Pipe

List Prices

35.5" LONG ROD COVERS (.015 thick) FOR BARE PIPE IPS & CPS			
Order	To Fit Over	List Price Per Foot	List Price Per Piece
3/4" *	3/4" Thd. Rod 1/2" IPS 1/2" Elect. Metal Tubing (EMT)	\$0.53	\$1.57
7/8"	3/4" EMT 7/8" Thd. Rod	0.67	1.98
1"	3/4" CPS 7/8" Thd. Rod	0.74	2.20
1 3/8"	1" CPS and 1 1/4" CPS 3/4" and 1" IPS 1 1/4" Thd. Rod	1.02	3.02

* May not cinch tightly on pipe.
Rod covers may have an extended lead time.

48" LONG CUT & CURL (.020 thick) FOR BARE PIPE IPS & CPS

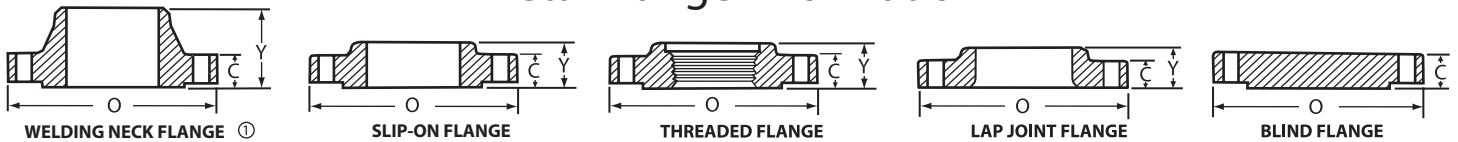
Nominal Pipe	Size
1 1/2" CPS	# 2
1 1/2" IPS	# 2
2" CPS	# 4
2" IPS	# 5
2 1/2" CPS	# 6
2 1/2" IPS	# 7
3" CPS	# 8
3" IPS	# 9
3 1/2" IPS	# 10
4" CPS	# 10
4" IPS	# 11
5" CPS	# 12
5" IPS	# 13
6" CPS	# 14
6" IPS	# 15
8" IPS	# 18
10" IPS	# 20
12" IPS	# 22
14" IPS	# 23
18" IPS	# 27
20" IPS	# 29
24" IPS	# 33

Choose mil thickness .020 X 35 1/2" long from page 29.
List prices are for LoSMOKE® with SSL on Long Lap.

Seamless Welding Fittings

Nom. Pipe Size	Pipe O.D.	POPULAR SIZE WALL THICKNESS													A	B	K	D	V	E	F		G	Nom. Pipe Size
		Light	Sch 20	Sch 30	Std	Sch 40	Sch 60	X-Stg	Sch 80	Sch 100	Sch 120	Sch 140	Sch 160	XX-Stg							ASA	MSS		
1/2	.840	.083109	.109147	.147188	.294	1 1/2	5/8	1 7/8	1	3	2	1 3/8	1/2
3/4	1.050	.083113	.113154	.154219	.308	1 1/8	7/16	1 11/16	1	3	2	1 11/16	3/4
1	1.315	.109133	.133179	.179250	.358	1 1/2	7/8	2 3/16	1	1 5/8	1 1/2	4	2	2	1
1 1/4	1.660	.109140	.140191	.191250	.382	1 7/8	1	2 3/4	1 1/4	2 1/16	1 1/2	4	2	2 1/2	1 1/4
1 1/2	1.900	.109145	.145200	.200281	.400	2 1/4	1 1/8	3 1/4	1 1/2	2 7/16	1 1/2	4	2	2 7/8	1 1/2
2	2.375	.109154	.154218	.218344	.436	3	1 3/8	4 3/16	2	3 3/16	1 1/2	6	2 1/2	3 5/8	2
2 1/2	2.875	.120203	.203276	.276375	.552	3 3/4	1 3/4	5 3/16	2 1/2	3 15/16	1 1/2	6	2 1/2	4 1/8	2 1/2
3	3.500	.120216	.216300	.300438	.600	4 1/2	2	6 1/4	3	4 3/4	2	6	2 1/2	5	3
3 1/2	4.000	.120226	.226318	.318500	.636	5 1/4	2 1/4	7 1/4	3 1/2	5 1/2	2 1/2	6	3	5 1/2	3 1/2
4	4.500	.120237	.237337	.337438531	.674	6	2 1/2	8 1/4	4	6 1/4	2 1/2	6	3	6 3/16	4
5	5.563	.134258	.258375	.375500625	.750	7 1/2	3 1/8	10 9/16	5	7 3/4	3	8	3	7 5/16	5
6	6.625	.134280	.280432	.432562719	.864	9	3 3/4	12 5/16	6	9 5/16	3 1/2	8	3 1/2	8 1/2	6
8	8.625	.148	.250	.277	.322	.322	.406	.500	.500	.594	.719	.812	.906	.875	12	5	16 5/16	8	12 5/16	4	8	4	10 5/8	8
10	10.750	.165	.250	.307	.365	.365	.500	.500	.594	.719	.844	1.000	1.125	1.000	15	6 1/4	20 3/8	10	15 3/8	5	10	5	12 3/4	10
12	12.750	.180	.250	.330	.375	.406	.562	.500	.688	.844	1.000	1.125	1.312	1.000	18	7 1/2	24 3/8	12	18 3/8	6	10	6	15	12
14	14.000	.250	.312	.375	.375	.438	.594	.500	.750	.938	1.094	1.250	1.406	...	21	8 3/4	28	14	21	6 1/2	12	...	16 1/4	14
16	16.000	.250	.312	.375	.375	.438	.656	.500	.844	1.031	1.219	1.438	1.594	...	24	10	32	16	24	7	12	...	18 1/2	16
18	18.000	.250	.312	.438	.375	.562	.750	.500	.938	1.156	1.375	1.562	1.781	...	27	11 1/4	36	18	27	8	12	...	21	18
20	20.000	.250	.375	.500	.375	.594	.812	.500	1.031	1.281	1.500	1.750	1.969	...	30	12 1/2	40	20	30	9	12	...	23	20
24	24.000	.250	.375	.562	.375	.688	.969	.500	1.219	1.531	1.812	2.062	2.344	...	36	15	48	24	36	10 1/2	12	...	27 1/4	24
30	30.000	.312	.500	.625	.375	.688500	45	18 1/2	60	30	45	10 1/2	30
36	36.000	.312	.500	.625	.375	.750500	54	22 1/4	...	36	54	10 1/2	36
42	42.000375500	63	26	...	42	...	12	42
48	48.000375500	72	29 3/4	...	48	...	13 1/2	48

Metal Flange Information



Nom. Pipe Size	150 LB.		300 LB.		400 LB.		600 LB.		Nom. Pipe Size	900 LB.		1500 LB.		2500 LB.		
	O	C	O	C	O	C	O	C		O	C	O	C	Nom. Pipe Size	O	C
1/2	3 1/2	7/16	3 3/4	9/16	3 3/4	9/16	3 3/4	9/16	1/2	4 3/4	7/8	4 3/4	7/8	1/2	5 1/4	1 3/16
3/4	3 7/8	1/2	4 3/8	5/8	4 3/8	5/8	4 3/8	5/8	3/4	5 1/8	1	5 1/8	1	3/4	5 1/2	1 1/4
1	4 1/4	9/16	4 7/8	1 1/16	4 7/8	1 1/16	4 7/8	1 1/16	1	5 7/8	1 1/8	5 7/8	1 1/8	1	6 1/4	1 3/8
1 1/4	4 5/8	5/8	5 1/4	3/4	5 1/4	13/16	5 1/4	13/16	1 1/4	6 1/4	1 1/8	6 1/4	1 1/8	1 1/4	7 1/4	1 1/2
1 1/2	5	1 1/16	6 1/8	13/16	6 1/8	7/8	6 1/8	7/8	1 1/2	7	1 1/4	7	1 1/4	1 1/2	8	1 3/4
2	6	3/4	6 1/2	7/8	6 1/2	1	6 1/2	1	2	8 1/2	1 1/2	8 1/2	1 1/2	2	9 1/4	2
2 1/2	7	7/8	7 1/2	1	7 1/2	1 1/8	7 1/2	1 1/8	2 1/2	9 5/8	1 5/8	9 5/8	1 5/8	2 1/2	10 1/2	2 1/4
3	7 1/2	15/16	8 1/4	1 1/8	8 1/4	1 1/4	8 1/4	1 1/4	3	9 1/2	1 1/2	10 1/2	1 7/8	3	12	2 5/8
3 1/2	8 1/2	1 1/16	9	1 3/8	9	1 3/8	9	1 3/8	3 1/2	4	14	3
4	9	1 1/8	10	1 1/4	10	1 3/8	10 3/4	1 1/2	4	11	1 3/4	12 1/4	2 1/8	5	16 1/2	3 5/8
5	10	1 1/16	11	1 3/8	11	1 1/2	13	1 3/4	5	13 3/4	2	14 3/4	2 7/8	6	19	4 1/4
6	11	1	12 1/2	1 7/8	12 1/2	1 5/8	14	1 7/8	6	15	2 3/16	15 1/2	3 1/4	8	21 3/4	5
8	13 1/2	1 1/8	15	1 5/8	15	1 7/8	16 1/2	2 3/16	8	18 1/2	2 1/2	19	3 5/8	10	26 1/2	6 1/2
10	16	1 3/16	17 1/2	1 7/8	17 1/2	2 1/8	20	2 1/2	10	21 1/2	2 3/4	23	4 1/4	12	30	7 1/4
12	19	1 1/4	20 1/2	2	20 1/2	2 1/4	22	2 5/8	12	24	3 1/8	26 1/2	4 7/8			
14	21	1 3/8	23	2 1/8	23	2 3/8	23 3/4	2 3/4	14	25 1/4	3 3/8	29 1/2	5 1/4			
16	23 1/2	1 7/8	25 1/2	2 1/4	25 1/2	2 1/2	27	3	16	27 3/4	3 1/2	32 1/2	5 3/4			
18	25	1 9/16	28	2 3/8	28	2 5/8	29 1/4	3 1/4	18	31	4	36	6 3/8			
20	27 1/2	1 11/16	30 1/2	2 1/2	30 1/2	2 3/4	32	3 1/2	20	33 3/4	4 1/4	38 3/4	7			
24	32	1 7/8	36	2 3/4	36	3	37	4	24	41	5 1/2	46	8			



10500 47th Street N • Clearwater, FL 33762

Toll Free: (800) 875-7768 • Office: (727) 573-4665 • Fax: (727) 572-6823

www.protocorporation.com

© 2.15.2018 Proto Corporation