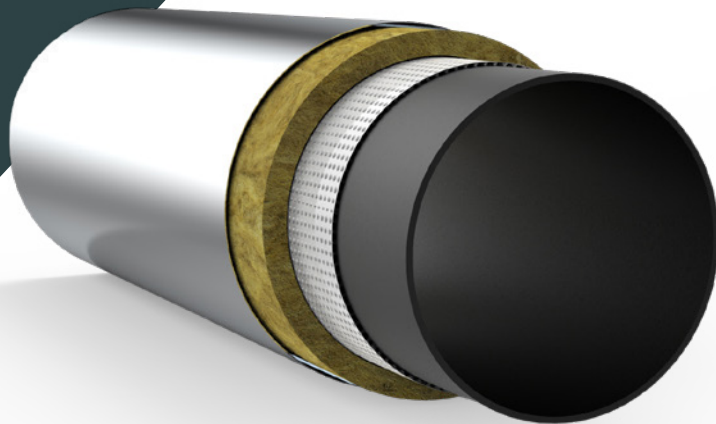


INTEGRITY PRODUCTS

Spacer Wrap

Patented

PTFE



Always wear appropriate PPE (personal protective equipment) which conforms to applicable work safe standards.



TOOLS REQUIRED



RETRACTABLE KNIFE

Cut the PTFE spacer wrap using retractable knife



ADHESIVE TAPE

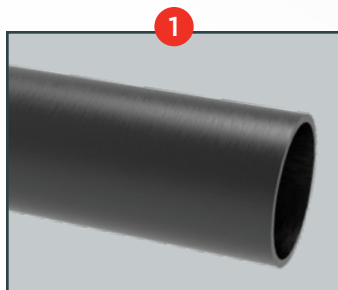
To secure the PTFE use Integrity Products high temperature resistance glass cloth tape.



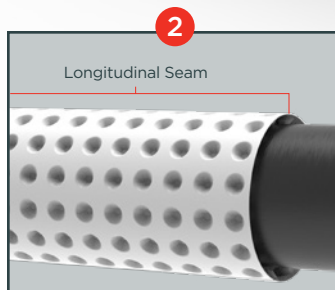
SCREWS



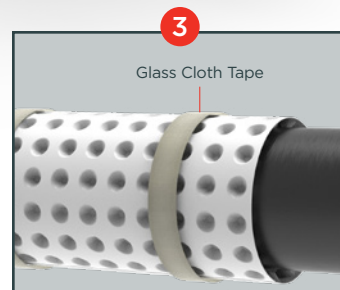
BANDING



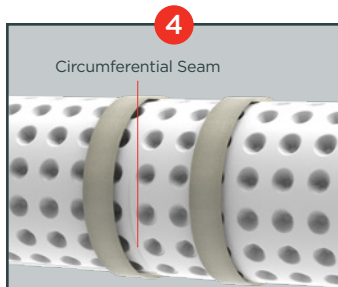
STEP 1
Ensure the pipe surface is clean, dry, and free of any damage, hazardous or sharp objects.



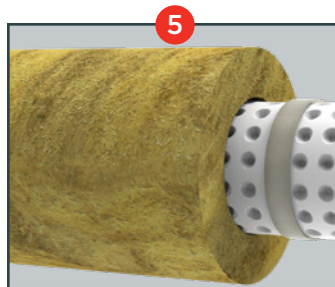
STEP 2
Wrap the PTFE sheet around the pipe and overlap the dimples at the longitudinal seam. Cut the PTFE spacer wrap using retractable knife to match the circumference and needed overlap. User may decide not to overlap at longitudinal seam to allow for low point drainage.
Recommended overlap: 2 dimples at minimum.



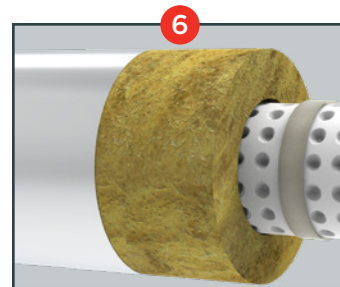
STEP 3
Secure the PTFE on the pipe using Integrity Products high temperature resistance glass cloth tape.



STEP 4
Install the adjacent wrap in the same manner as described in steps 1-3 by allowing the overlap of dimples at circumferential seams.
Recommended overlap: 2 dimples at minimum.



STEP 5
Wrap the insulation over the PTFE wrap. Ensure to oversize the insulation by 1/2" to accommodate the 6mm standoff created by PTFE dimple wrap.

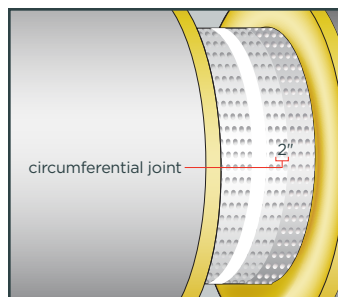
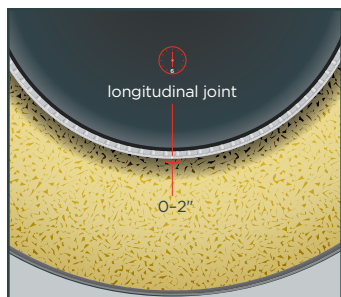
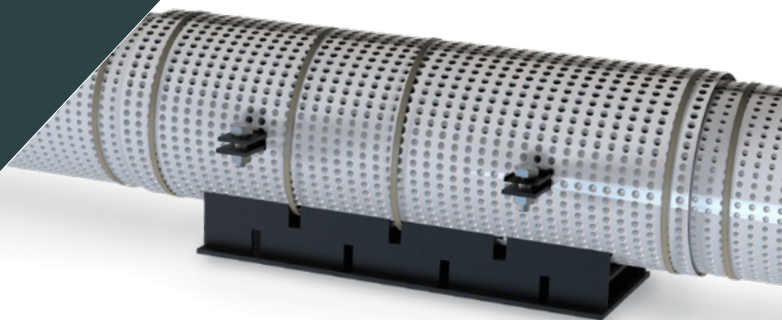


STEP 6
Install the jacketing over the insulation and secure the jacketing in place via banding and screws.

INTEGRITY PRODUCTS

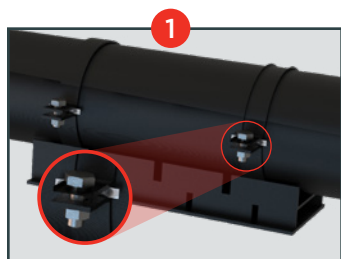
Spacer Wrap

PTFE | CLAMPED PIPE SHOES



IMPORTANT NOTE:

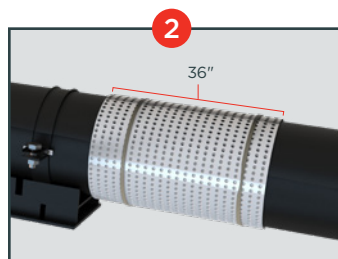
The purpose of the PTFE Spacer Wrap is to create a non-contact insulation system on the entire surface of the pipe and **at no point should the insulation be able to contact the pipe surface**. It is installed dimple side in facing the pipe with the longitudinal joint at the 6 o'clock position. Circumference joints to have a 2" overlap and longitude joint to have 0-2" overlap, as per application requirements.



STEP 1

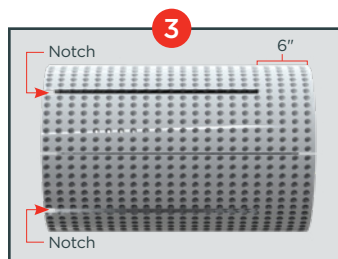
Ensure the surface of the pipe shoe is clean, dry, and free of any damage, hazardous, or sharp objects.

Cut small strips of PTFE, adjust to fit behind the bolt of the pipe clamps.



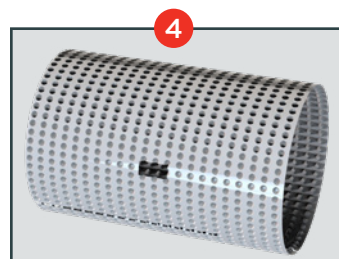
STEP 2

Install PTFE Spacer Wrap over and around the pipe. Place the first 36" section of PTFE up against one end of the shoe, secure into place with our recommended Integrity's High Temperature (HT) cloth glass tape.



STEP 3

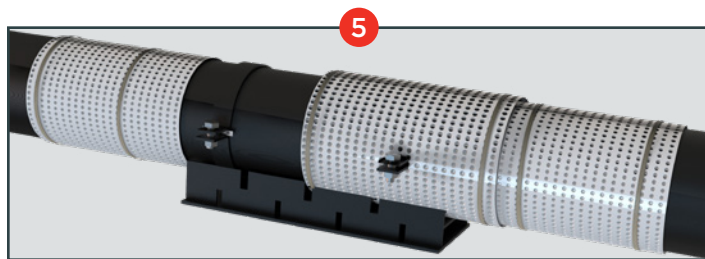
Cut the PTFE Spacer Wrap for each side of the shoes as follow:
 a) Measure and cut each sheet for the circumference of the pipe application and allow for the 2 dimple overlap and 6" on the outer end of the PTFE for extra protection against water ingress.
 b) Measure and cut out notches for particular shoe application.



STEP 4

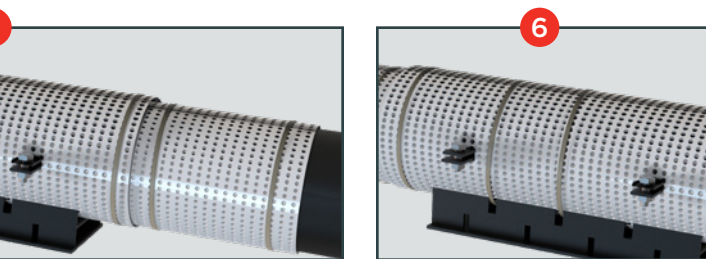
Cut notches to the dimensions of each Pipe clamp to allow fitment of the PTFE Spacer Wrap.

Always wear appropriate PPE (personal protective equipment) which conforms to applicable work safe standards. 



STEP 5

Install the PTFE Spacer Wrap by gliding the notched-out sheet and gently guide into proper placement.



STEP 6

This forms a complete coverage of the pipes surface and insulation can be installed as normal

TOOLS REQUIRED



RETRACTABLE KNIFE

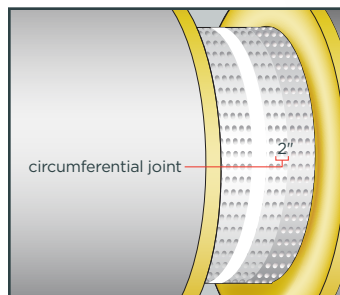
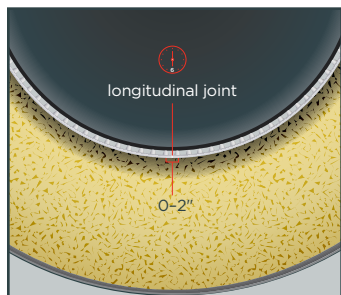


ADHESIVE TAPE

INTEGRITY PRODUCTS

Spacer Wrap

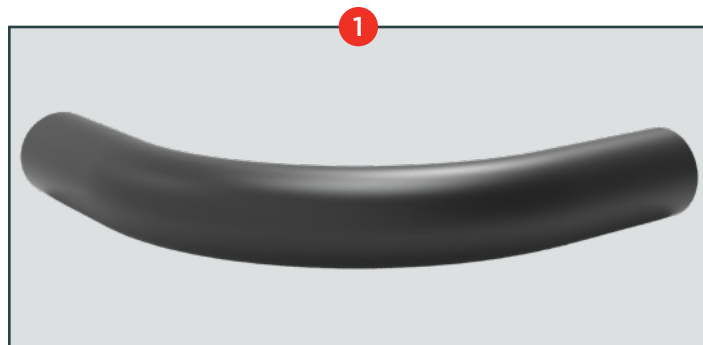
PTFE | PIPE SWEEPS & BENDS



IMPORTANT NOTE:

The purpose of the PTFE Spacer Wrap is to create a non-contact insulation system on the entire surface of the pipe and **at no point should the insulation be able to contact the pipe surface**. It is installed dimple side in facing the pipe with the longitudinal joint at the 6 o'clock position. Circumference joints to have a 2" overlap and longitude joint to have 0-2" overlap, as per application requirements.

Always wear appropriate PPE (personal protective equipment) which conforms to applicable work safe standards.



STEP 1

Ensure the surface of bend is clean, dry, and free of any damage, hazardous, or sharp objects.

TOOLS REQUIRED



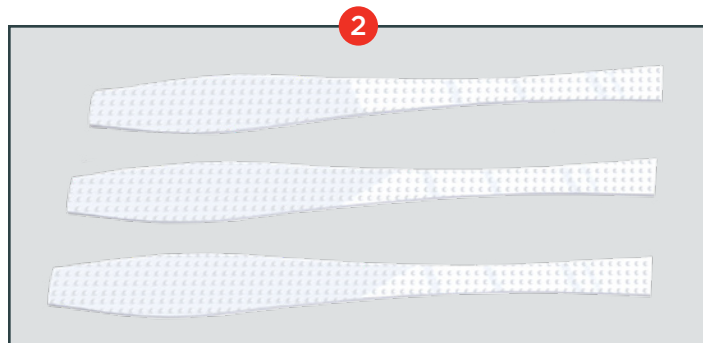
RETRACTABLE KNIFE

Cut the PTFE spacer wrap using retractable knife



ADHESIVE TAPE

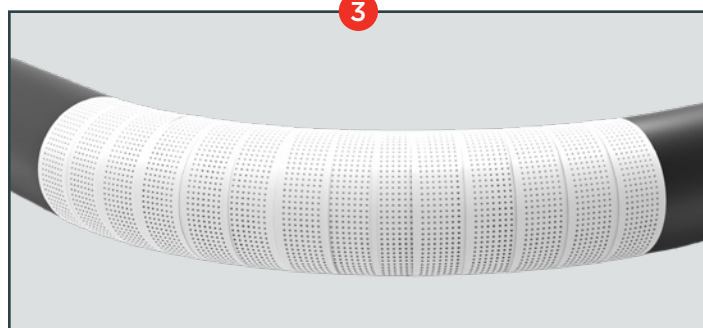
To secure the PTFE use Integrity's High Temperature (HT) glass cloth tape.



STEP 2

Cut the PTFE Spacer Wrap into gores adequate for the pipe size and bend radius you are installing on to.

Cut the gores to ensure the joint finishes at the 6 o'clock position.



STEP 3

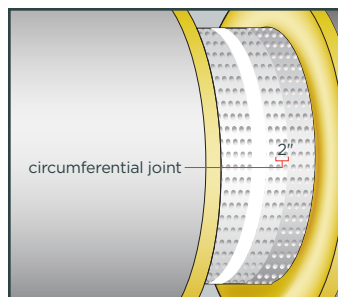
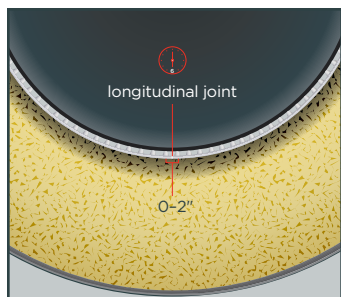
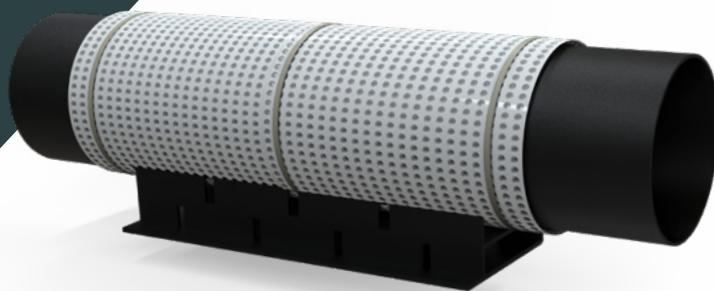
Install each individual gore over and around the bend. Maintain **2 dimples overlap** along the circumferential joint on each gore. Secure the gores in place with our recommended Integrity's High Temperature (HT) glass cloth tape.

Continue this process until the bend is completely wrapped.

INTEGRITY PRODUCTS

Spacer Wrap

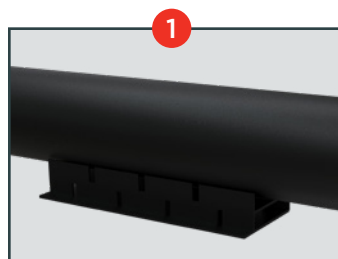
PTFE | WELDED PIPE SHOES



IMPORTANT NOTE:

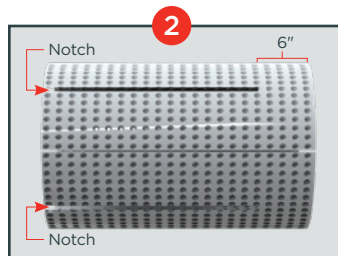
The purpose of the PTFE Spacer Wrap is to create a non-contact insulation system on the entire surface of the pipe and **at no point should the insulation be able to contact the pipe surface**. It is installed dimple side in facing the pipe with the longitudinal joint at the 6 o'clock position. Circumference joints to have a 2" overlap and longitude joint to have 0-2" overlap, as per application requirements.

Always wear appropriate PPE (personal protective equipment) which conforms to applicable work safe standards.



STEP 1

Ensure the surface of the pipe shoe is clean, dry, and free of any damage, hazardous, or sharp objects.



STEP 2

Cut the PTFE Spacer Wrap for each side of the shoes as follows:
 a) Measure and cut each sheet for the circumference of the pipe application and allow for the 2 dimple overlap and 6" on the outer end of the PTFE for extra protection against water ingress.
 b) Measure and cut out notches for required shoe application.

TOOLS REQUIRED



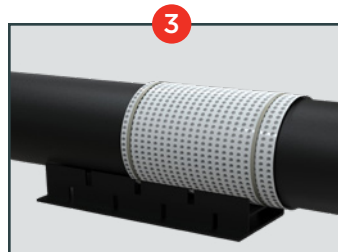
RETRACTABLE KNIFE

Cut the PTFE spacer wrap using retractable knife



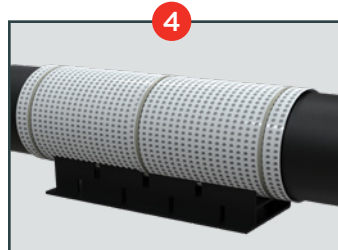
ADHESIVE TAPE

To secure the PTFE use Integritys' High Temperature (HT) glass cloth tape.



STEP 3

Install the PTFE Spacer Wrap by gliding the notched-out sheet and gently guide into proper placement. Secure into place with our recommended Integritys' High Temperature (HT) glass cloth tape.



STEP 4

Repeat Step 2
 Ensure that two pieces of PTFE spacer wrap have 2" overlap at the circumferential seam located in the centre of the shoe. Secure the second piece of PTFE spacer wrap into place with our recommended Integritys' High Temperature (HT) glass cloth tape. *This forms a complete coverage of the pipes surface and insulation can be installed as normal.*